

Product Information

Size:

50ul

Reactivity:

Human

Source:

Rabbit

Isotype:

IgG

Applications:

ELISA, WB, IHC

Recommended dilutions:

ELISA:1:2000-1:10000, WB:1:200-1:1000,
IHC:1:20-1:200

Protein Background:

Suppresses TNF- and CD40-induced NFKB1 activity at the level of the IKK complex, by inhibiting NFKBIA degradation induced by TNF. When associated with PYCARD, activates CASP1, leading to the secretion of mature proinflammatory cytokine IL1B. May be a component of the inflammasome, a protein complex which also includes PYCARD, CARD8 and CASP1 and whose function would be the activation of proinflammatory caspases.

Gene ID:

NLRP2

Uniprot

Q9NX02

Synonyms:

NACHT, LRR and PYD domains-containing protein 2 (Nucleotide-binding site protein 1) (PYRIN domain and NACHT domain-containing protein 1) (PYRIN-containing APAF1-like protein 2), NLRP2, NALP2 NBS1 PAN1 PYPAF2

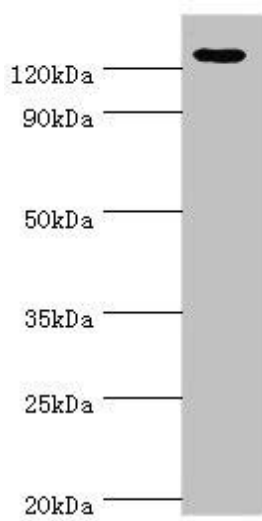
Immunogen:

Recombinant Human NACHT, LRR and PYD domains-containing protein 2 protein (1-220AA).

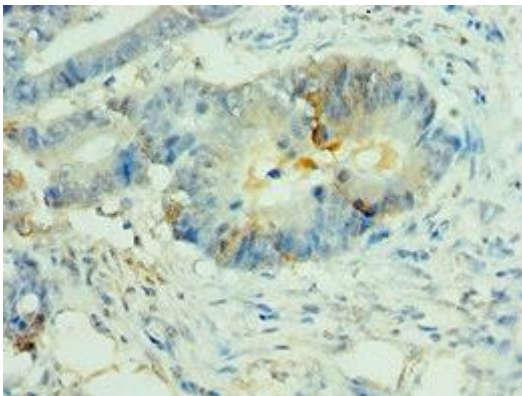
Storage:

PBS with 0.02% sodium azide, 50% glycerol, pH7.3.

Product Images



Western blot. All lanes: NLRP2 antibody at 12 μ g/ml + A431 whole cell lysate. Secondary. Goat polyclonal to rabbit IgG at 1/10000 dilution. Predicted band size: 121, 119, 97, 118 kDa. Observed band size: 121 kDa.



Immunohistochemistry of paraffin-embedded human colon cancer using PACO43819 at dilution of 1:100.