

### Product Information

**Size:**

50ul

**Reactivity:**

Human, Mouse

**Source:**

Rabbit

**Isotype:**

IgG

**Applications:**

ELISA, WB, IHC

**Recommended dilutions:**

ELISA:1:2000-1:10000, WB:1:500-1:2000,  
IHC:1:20-1:200

**Protein Background:**

RNA-binding protein involved in modulation of mRNA transcription by Polymerase II. In case of infection by influenza virus A, is involved in viral replication. Component of the tRNA-splicing ligase complex and is required for tRNA ligation. May be required for RNA transport.

**Gene ID:**

RTRAF

**Uniprot**

Q9Y224

**Synonyms:**

RNA transcription, translation and transport factor protein (CLE7 homolog) (CLE) (hCLE), RTRAF, C14orf166

**Immunogen:**

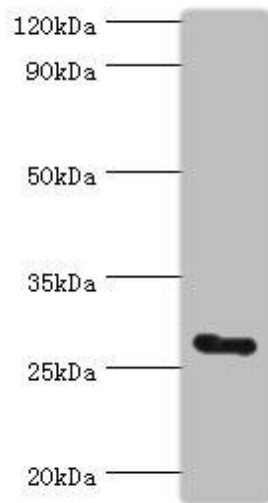
Recombinant Human RNA transcription, translation and transport factor protein (1-244AA).

**Storage:**

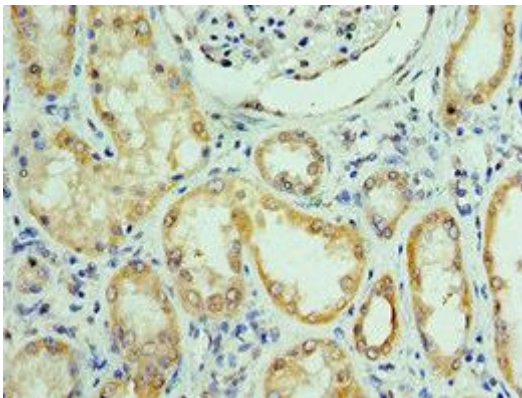
PBS with 0.02% sodium azide, 50% glycerol, pH7.3.

## Product Images

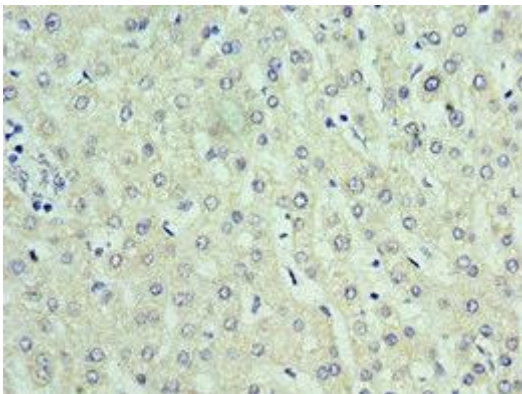
---



Western blot. All lanes: C14orf166 antibody at 6 $\mu$ g/ml + Mouse lung tissue. Secondary. Goat polyclonal to rabbit IgG at 1/10000 dilution. Predicted band size: 28 kDa. Observed band size: 28 kDa.



Immunohistochemistry of paraffin-embedded human kidney tissue using PACO43801 at dilution of 1:100.



Immunohistochemistry of paraffin-embedded human liver tissue using PACO43801 at dilution of 1:100.