

PACO43793

Product Information

Size:

50ul

Reactivity:

Human

Source:

Rabbit

Isotype:

IgG

Applications:

ELISA, IHC

Recommended dilutions:

ELISA:1:2000-1:10000, IHC:1:20-1:200

Protein Background:

Probable cytoskeletal component that directly or indirectly plays an important role in neurofilament architecture. May act as a substrate-specific adapter of an E3 ubiquitin-protein ligase complex which mediates the ubiquitination and subsequent proteasomal degradation of target proteins. Controls degradation of TBCB. Controls degradation of MAP1B and MAP1S, and is critical for neuronal maintenance and survival.

Gene ID:

GAN

Uniprot

Q9H2C0

Synonyms:

Gigaxonin (Kelch-like protein 16), GAN, GAN1 KLHL16

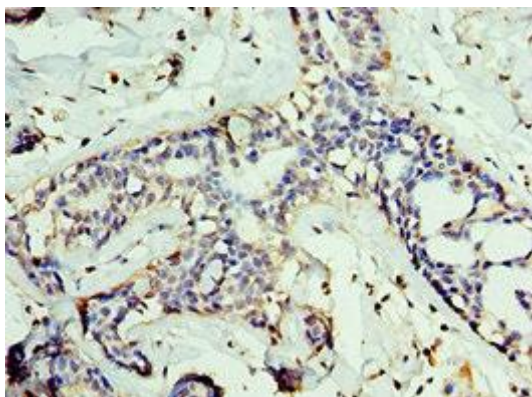
Immunogen:

Recombinant Human Gigaxonin protein (1-240AA).

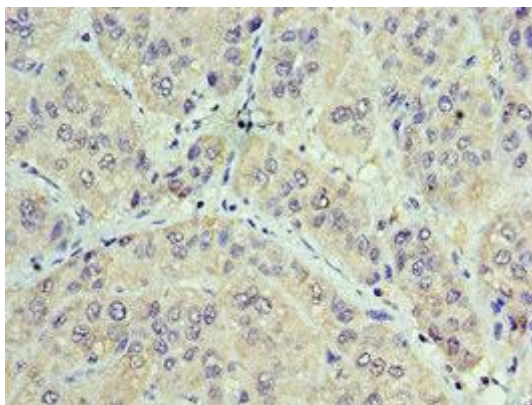
Storage:

PBS with 0.02% sodium azide, 50% glycerol, pH7.3.

Product Images



Immunohistochemistry of paraffin-embedded human breast cancer using PACO43793 at dilution of 1:100.



Immunohistochemistry of paraffin-embedded human liver cancer using PACO43793 at dilution of 1:100.