

# CCT6A Antibody



PACO43785

---

## Product Information

**Size:**

50ul

**Reactivity:**

Human

**Source:**

Rabbit

**Isotype:**

IgG

**Applications:**

ELISA, IHC, IP

**Recommended dilutions:**

ELISA:1:2000-1:10000, IHC:1:20-1:200,  
IP:1:200-1:2000

**Protein Background:**

Molecular chaperone; assists the folding of proteins upon ATP hydrolysis. Known to play a role, in vitro, in the folding of actin and tubulin.

**Gene ID:**

CCT6A

**Uniprot**

P40227

**Synonyms:**

T-complex protein 1 subunit zeta (TCP-1-zeta) (Acute morphine dependence-related protein 2) (CCT-zeta-1) (HTR3) (Tcp20), CCT6A, CCT6 CCTZ

**Immunogen:**

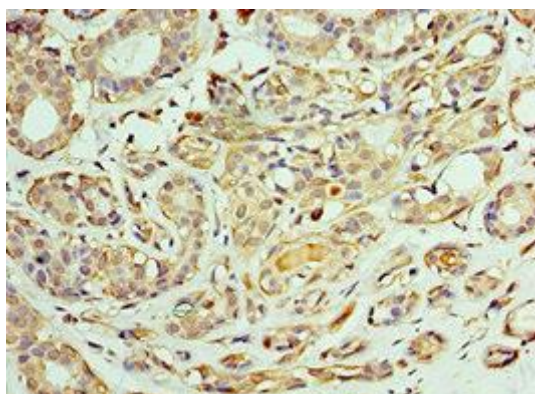
Recombinant Human T-complex protein 1 subunit zeta protein (80-250AA).

**Storage:**

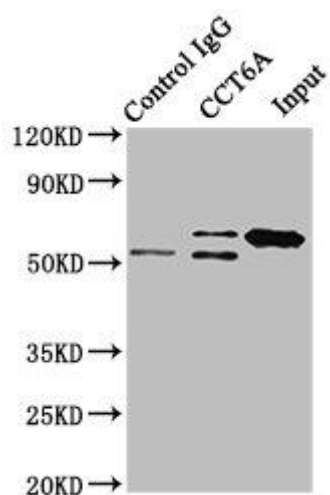
PBS with 0.02% sodium azide, 50% glycerol, pH7.3.

## Product Images

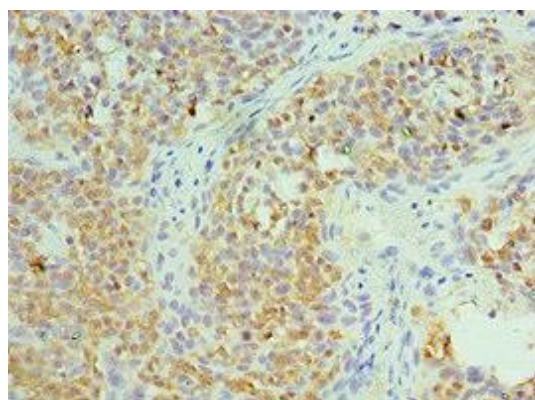
---



Immunohistochemistry of paraffin-embedded human breast cancer using PACO43785 at dilution of 1:100.



Immunoprecipitating CCT6A in HeLa whole cell lysate. Lane 1: Rabbit control IgG instead of PACO43785 in HeLa whole cell lysate. For western blotting, a HRP-conjugated Protein G antibody was used as the secondary antibody (1/2000). Lane 2: PACO43785 (8 $\mu$ g) + HeLa whole cell lysate (500 $\mu$ g). Lane 3: HeLa whole cell lysate (10 $\mu$ g).



Immunohistochemistry of paraffin-embedded human tonsil tissue using PACO43785 at dilution of 1:100.