

Product Information

Size:

50ul

Reactivity:

Human

Source:

Rabbit

Isotype:

IgG

Applications:

ELISA, IHC

Recommended dilutions:

ELISA:1:2000-1:10000, IHC:1:20-1:200

Protein Background:

Deubiquitinating enzyme (DUB) that controls levels of cellular ubiquitin through processing of ubiquitin precursors and ubiquitinated proteins. Thiol protease that recognizes and hydrolyzes a peptide bond at the C-terminal glycine of either ubiquitin or NEDD8. Has a 10-fold preference for Arg and Lys at position P3", and exhibits a preference towards 'Lys-48'-linked Ubiquitin chains. Deubiquitinates ENAC in apical compartments, thereby regulating apical membrane recycling. Indirectly increases the phosphorylation of IGF1R, AKT and FOXO1 and promotes insulin-signaling and insulin-induced adipogenesis. Required for stress-response retinal, skeletal muscle and germ cell maintenance. May be involved in working memory. Can hydrolyze UBB(+1), a mutated form of ubiquitin which is not effectively degraded by the proteasome and is associated with neurodegenerative disorders.

Gene ID:

UCHL3

Uniprot

P15374

Synonyms:

Ubiquitin carboxyl-terminal hydrolase isozyme L3 (UCH-L3) (EC 3.4.19.12) (Ubiquitin thioesterase L3), UCHL3

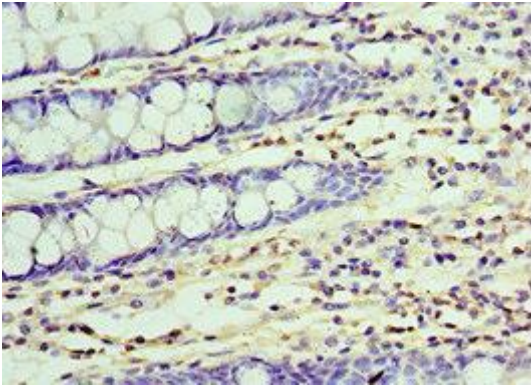
Immunogen:

Recombinant Human Ubiquitin carboxyl-terminal hydrolase isozyme L3 protein (1-220AA).

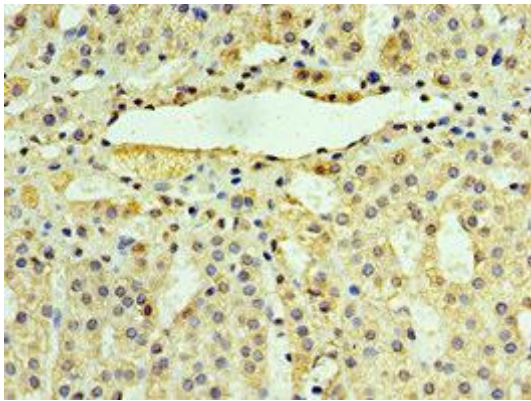
Storage:

PBS with 0.02% sodium azide, 50% glycerol, pH7.3.

Product Images



Immunohistochemistry of paraffin-embedded human colon tissue using PACO43772 at dilution of 1:100.



Immunohistochemistry of paraffin-embedded human adrenal gland tissue using PACO43772 at dilution of 1:100.