

Product Information

Size:

50ul

Reactivity:

Human

Source:

Rabbit

Isotype:

IgG

Applications:

ELISA, WB, IHC

Recommended dilutions:

ELISA:1:2000-1:10000, WB:1:500-1:2000,
IHC:1:20-1:200

Protein Background:

Component of the tectonic-like complex, a complex localized at the transition zone of primary cilia and acting as a barrier that prevents diffusion of transmembrane proteins between the cilia and plasma membranes. Required for hedgehog signaling transduction.

Gene ID:

TCTN2

Uniprot

Q96GX1

Synonyms:

Tectonic-2, TCTN2, C12orf38 TECT2

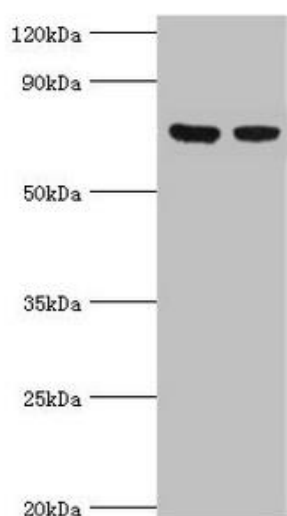
Immunogen:

Recombinant Human Tectonic-2 protein (420-670AA).

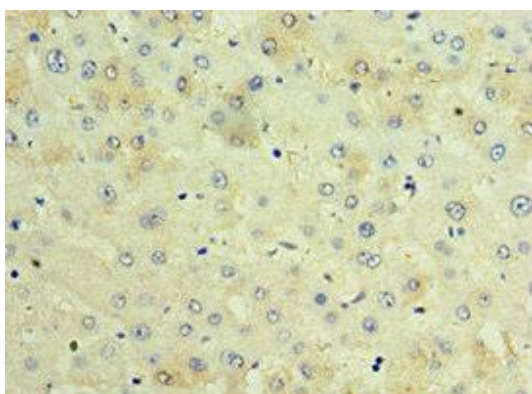
Storage:

PBS with 0.02% sodium azide, 50% glycerol, pH7.3.

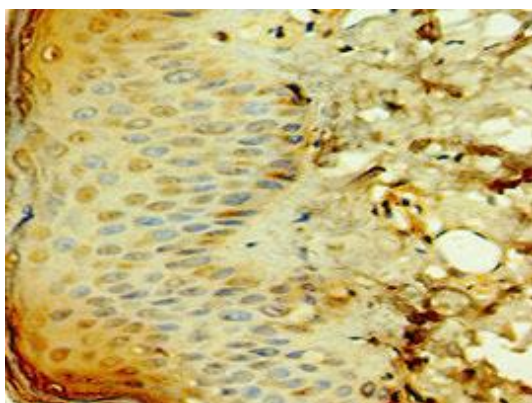
Product Images



Western blot. All lanes: TCTN2 antibody at 10 μ g/ml. Lane 1: Jurkat whole cell lysate. Lane 2: A549 whole cell lysate. Secondary: Goat polyclonal to rabbit IgG at 1/10000 dilution. Predicted band size: 77 kDa. Observed band size: 77 kDa.



Immunohistochemistry of paraffin-embedded human liver tissue using PACO43763 at dilution of 1:100.



Immunohistochemistry of paraffin-embedded human skin tissue using PACO43763 at dilution of 1:100.