

PACO43762

Product Information

Size:

50ul

Reactivity:

Human

Source:

Rabbit

Isotype:

IgG

Applications:

ELISA, WB, IHC

Recommended dilutions:

ELISA:1:2000-1:10000, WB:1:200-1:1000,
IHC:1:20-1:200

Protein Background:

Component of RNA polymerase I core factor complex that acts as a GTF2B/TFIIB-like factor and plays a key role in multiple steps during transcription initiation such as preinitiation complex (PIC) assembly and postpolymerase recruitment events in polymerase I (Pol I) transcription. Binds rDNA promoters and plays a role in Pol I recruitment as a component of the SL1/TIF-IB complex and, possibly, directly through its interaction with RRN3.

Gene ID:

TAF1B

Uniprot

Q53T94

Synonyms:

TATA box-binding protein-associated factor RNA polymerase I subunit B (RNA polymerase I-specific TBP-associated factor 63 kDa) (TAFI63) (TATA box-binding protein-associated factor 1B) (TBP-associated factor 1B) (Transcription initiation factor SL1/TIF-IB subunit B), TAF1B

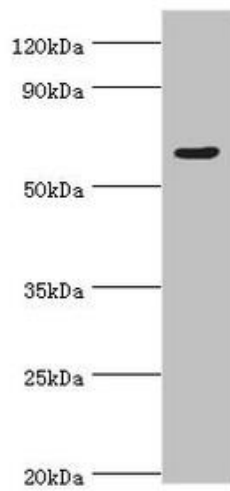
Immunogen:

Recombinant Human TATA box-binding protein-associated factor RNA polymerase I subunit B protein (369-588AA).

Storage:

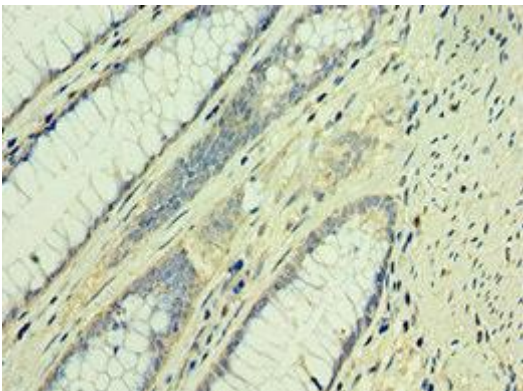
PBS with 0.02% sodium azide, 50% glycerol, pH7.3.

Product Images



Western blot.

All lanes: TATA box-binding protein-associated factor RNA polymerase I subunit B antibody at 4 μ g/ml + HeLa whole cell lysate. Secondary. Goat polyclonal to rabbit IgG at 1/10000 dilution. Predicted band size: 69, 61, 40 kDa. Observed band size: 69 kDa.



Immunohistochemistry of paraffin-embedded human colon cancer using PACO43762 at dilution of 1:100.