

# SSNA1 Antibody



PACO43760

---

## Product Information

**Size:**

50ul

**Reactivity:**

Human

**Source:**

Rabbit

**Isotype:**

IgG

**Applications:**

ELISA, IHC

**Recommended dilutions:**

ELISA:1:2000-1:10000, IHC:1:20-1:200

**Protein Background:**

**Gene ID:**

SSNA1

**Uniprot**

O43805

**Synonyms:**

Sjogren syndrome nuclear autoantigen 1 (Nuclear autoantigen of 14 kDa), SSNA1, NA14

**Immunogen:**

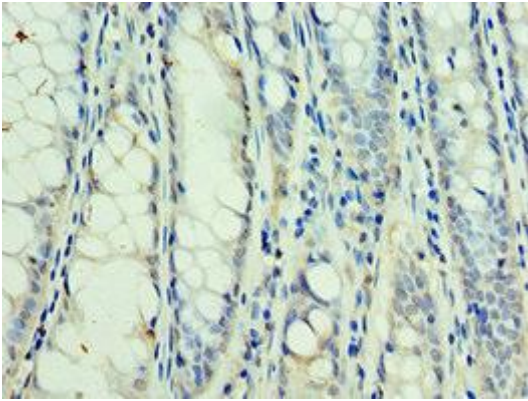
Recombinant Human Sjogren syndrome nuclear autoantigen 1 protein (1-119AA).

**Storage:**

PBS with 0.02% sodium azide, 50% glycerol, pH7.3.

## Product Images

---



Immunohistochemistry of paraffin-embedded human colon cancer using PACO43760 at dilution of 1:100.