

# S100A3 Antibody



PACO43759

---

## Product Information

**Size:**

50ul

**Reactivity:**

Human

**Source:**

Rabbit

**Isotype:**

IgG

**Applications:**

ELISA, IHC

**Recommended dilutions:**

ELISA:1:2000-1:10000, IHC:1:20-1:200

**Protein Background:**

Binds both calcium and zinc. May be involved in calcium-dependent cuticle cell differentiation, hair shaft and hair cuticular barrier formation.

**Gene ID:**

S100A3

**Uniprot**

P33764

**Synonyms:**

Protein S100-A3 (Protein S-100E) (S100 calcium-binding protein A3), S100A3, S100E

**Immunogen:**

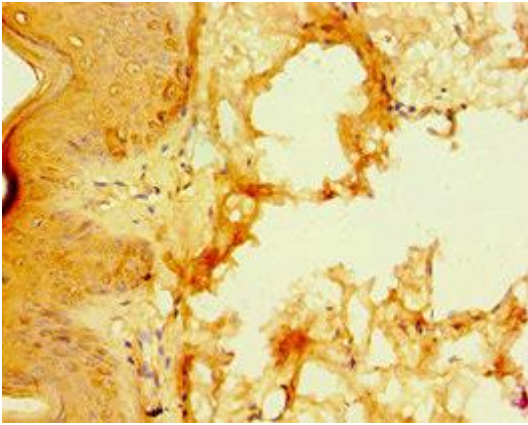
Recombinant Human Protein S100-A3 protein (1-101AA).

**Storage:**

PBS with 0.02% sodium azide, 50% glycerol, pH7.3.

## Product Images

---



Immunohistochemistry of paraffin-embedded human skin tissue using PACO43759 at dilution of 1:100.