

PACO43756

---

## Product Information

**Size:**

50ul

**Reactivity:**

Human

**Source:**

Rabbit

**Isotype:**

IgG

**Applications:**

ELISA, IHC

**Recommended dilutions:**

ELISA:1:2000-1:10000, IHC:1:20-1:200

**Protein Background:**

Growth factor that plays an essential role in the regulation of embryonic development, cell proliferation, cell migration, survival and chemotaxis. Potent mitogen for cells of mesenchymal origin. Plays an important role in wound healing. Induces macrophage recruitment, increased interstitial pressure, and blood vessel maturation during angiogenesis. Can initiate events that lead to a mesangial proliferative glomerulonephritis, including influx of monocytes and macrophages and production of extracellular matrix.

**Gene ID:**

PDGFD

**Uniprot**

Q9GZP0

**Synonyms:**

Platelet-derived growth factor D (PDGF-D) (Iris-expressed growth factor) (Spinal cord-derived growth factor B) (SCDGF-B) [Cleaved into: Platelet-derived growth factor D, latent form (PDGFD latent form); Platelet-derived growth factor D, receptor-binding form (PDGFD receptor-binding form)], PDGFD, IEGF SCDGFB

**Immunogen:**

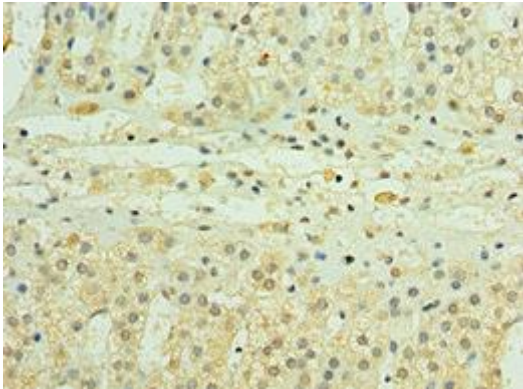
Recombinant Human Platelet-derived growth factor D protein (191-370AA).

**Storage:**

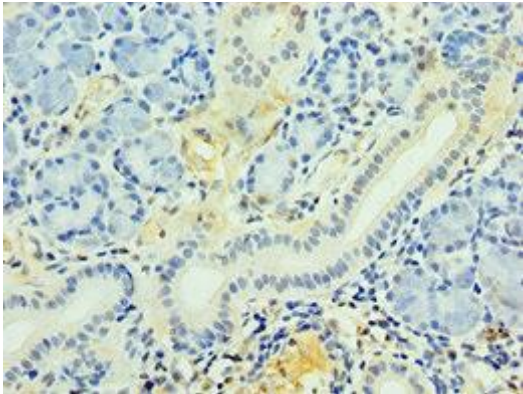
PBS with 0.02% sodium azide, 50% glycerol, pH7.3.

## Product Images

---



Immunohistochemistry of paraffin-embedded human adrenal gland tissue using PACO43756 at dilution of 1:100.



Immunohistochemistry of paraffin-embedded human pancreatic tissue using PACO43756 at dilution of 1:100.