

PACO43753

---

## Product Information

**Size:**

50ul

**Reactivity:**

Human

**Source:**

Rabbit

**Isotype:**

IgG

**Applications:**

ELISA, IHC, IP

**Recommended dilutions:**

ELISA:1:2000-1:10000, IHC:1:20-1:200,  
IP:1:200-1:2000

**Protein Background:**

Downregulates SLC1A2/EAAT2 promoter activity when expressed ectopically. Activates the nuclear factor kappa-B (NF-kappa-B) transcription factor. Promotes anchorage-independent growth of immortalized melanocytes and astrocytes which is a key component in tumor cell expansion. Promotes lung metastasis and also has an effect on bone and brain metastasis, possibly by enhancing the seeding of tumor cells to the target organ endothelium. Induces chemoresistance.

**Gene ID:**

MTDH

**Uniprot**

Q86UE4

**Synonyms:**

Protein LYRIC (3D3/LYRIC) (Astrocyte elevated gene-1 protein) (AEG-1) (Lysine-rich CEACAM1 co-isolated protein) (Metadherin) (Metastasis adhesion protein), MTDH, AEG1 LYRIC

**Immunogen:**

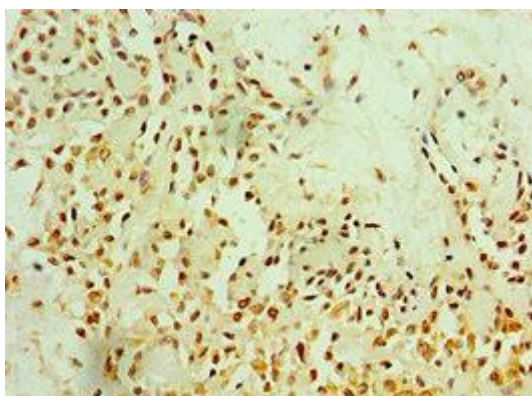
Recombinant Human Protein LYRIC protein (1-260AA).

**Storage:**

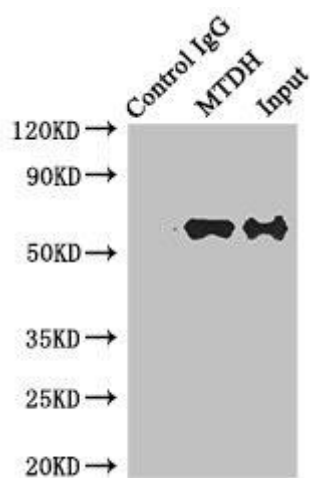
PBS with 0.02% sodium azide, 50% glycerol, pH7.3.

## Product Images

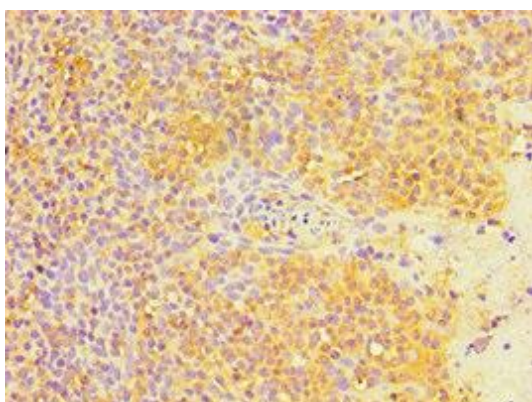
---



Immunohistochemistry of paraffin-embedded human breast cancer using PACO43753 at dilution of 1:100.



Immunoprecipitating MTDH in HeLa whole cell lysate. Lane 1: Rabbit control IgG instead of (1 $\mu$ g) instead of PACO43753 in HeLa whole cell lysate. For western blotting, a HRP-conjugated anti-rabbit IgG, specific to the non-reduced form of IgG was used as the Secondary antibody (1/50000). Lane 2: PACO43753 (4 $\mu$ g) + HeLa whole cell lysate (500 $\mu$ g). Lane 3: HeLa whole cell lysate (20 $\mu$ g).



Immunohistochemistry of paraffin-embedded human tonsil tissue using PACO43753 at dilution of 1:100.