

PACO43740

Product Information

Size:

50ul

Reactivity:

Human

Source:

Rabbit

Isotype:

IgG

Applications:

ELISA, IHC

Recommended dilutions:

ELISA:1:2000-1:10000, IHC:1:20-1:200

Protein Background:

PPIases accelerate the folding of proteins. It catalyzes the cis-trans isomerization of proline imidic peptide bonds in oligopeptides.

Gene ID:

FKBP2

Uniprot

P26885

Synonyms:

Peptidyl-prolyl cis-trans isomerase FKBP2 (PPIase FKBP2) (EC 5.2.1.8) (13 kDa FK506-binding protein) (13 kDa FKBP) (FKBP-13) (FK506-binding protein 2) (FKBP-2) (Immunophilin FKBP13) (Rotamase), FKBP2, FKBP13

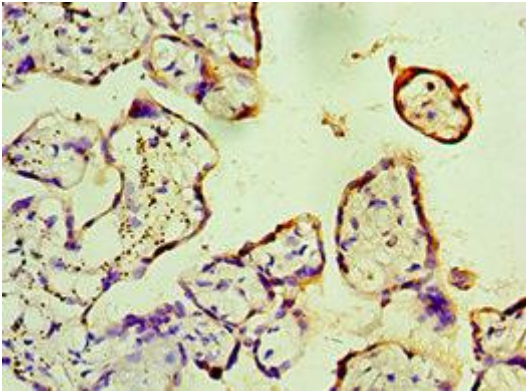
Immunogen:

Recombinant Human Peptidyl-prolyl cis-trans isomerase FKBP2 protein (22-142AA).

Storage:

PBS with 0.02% sodium azide, 50% glycerol, pH7.3.

Product Images



Immunohistochemistry of paraffin-embedded human placenta tissue using PACO43740 at dilution of 1:100.