

EXOC2 Antibody



PACO43736

Product Information

Size:

50ul

Reactivity:

Human

Source:

Rabbit

Isotype:

IgG

Applications:

ELISA, IHC

Recommended dilutions:

ELISA:1:2000-1:10000, IHC:1:20-1:200

Protein Background:

Component of the exocyst complex involved in the docking of exocytic vesicles with fusion sites on the plasma membrane.

Gene ID:

EXOC2

Uniprot

Q96KP1

Synonyms:

Exocyst complex component 2 (Exocyst complex component Sec5), EXOC2, SEC5, SEC5L1

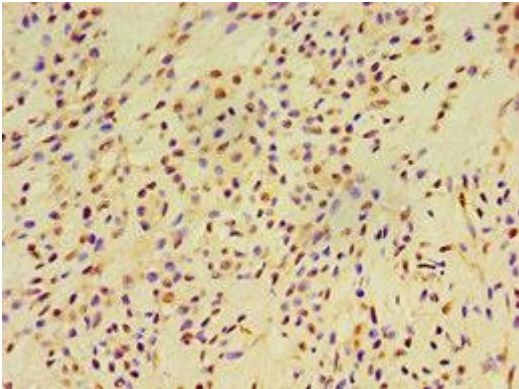
Immunogen:

Recombinant Human Exocyst complex component 2 protein (1-220AA).

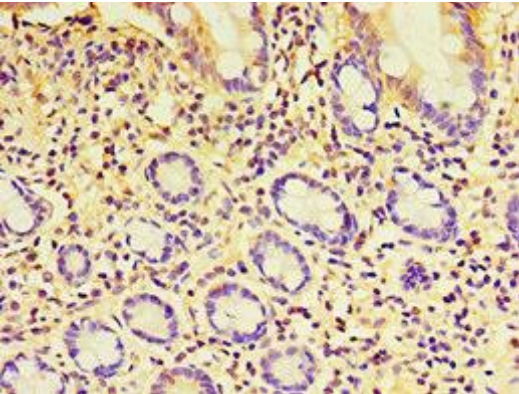
Storage:

PBS with 0.02% sodium azide, 50% glycerol, pH7.3.

Product Images



Immunohistochemistry of paraffin-embedded human breast cancer using PACO43736 at dilution of 1:100.



Immunohistochemistry of paraffin-embedded human small intestine tissue using PACO43736 at dilution of 1:100.