

DUSP7 Antibody



PACO43728

Product Information

Size:

50ul

Reactivity:

Human

Source:

Rabbit

Isotype:

IgG

Applications:

ELISA, WB, IHC

Recommended dilutions:

ELISA:1:2000-1:10000, WB:1:500-1:2000,
IHC:1:20-1:200

Protein Background:

Regulates the activity of the MAP kinase family in response to changes in the cellular environment. PYST2-S may act as a negative regulator of PYST2-L although it is unclear whether this is by competing for transcription, translation or activation factors.

Gene ID:

DUSP7

Uniprot

Q16829

Synonyms:

Dual specificity protein phosphatase 7 (EC 3.1.3.16) (EC 3.1.3.48) (Dual specificity protein phosphatase PYST2), DUSP7, PYST2

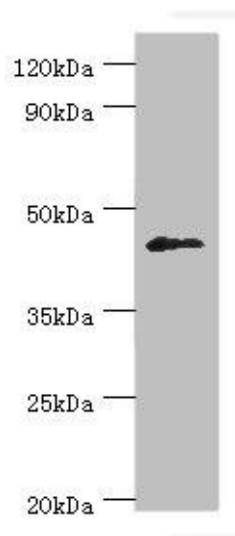
Immunogen:

Recombinant Human Dual specificity protein phosphatase 7 protein (160-419AA).

Storage:

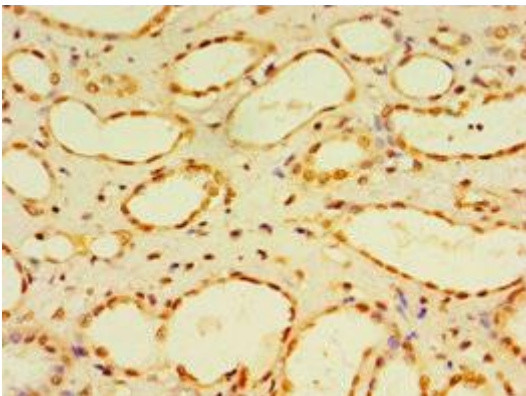
PBS with 0.02% sodium azide, 50% glycerol, pH7.3.

Product Images

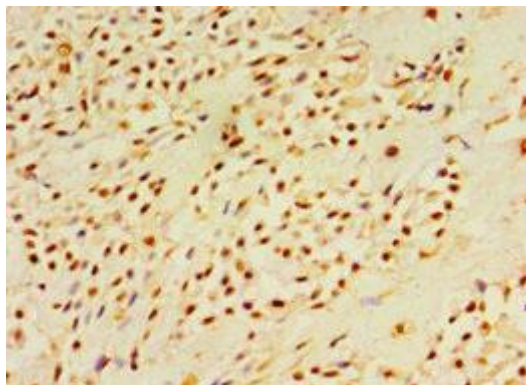


Western blot.

All lanes: Dual specificity protein phosphatase 7 antibody at 10 μ g/ml + HepG2 whole cell lysate. Secondary. Goat polyclonal to rabbit IgG at 1/10000 dilution. Predicted band size: 45, 41 kDa. Observed band size: 45 kDa.



Immunohistochemistry of paraffin-embedded human kidney tissue using PACO43728 at dilution of 1:100.



Immunohistochemistry of paraffin-embedded human breast cancer using PACO43728 at dilution of 1:100.