

# DACT3 Antibody



PACO43724

---

## Product Information

**Size:**

50ul

**Reactivity:**

Human

**Source:**

Rabbit

**Isotype:**

IgG

**Applications:**

ELISA, IHC

**Recommended dilutions:**

ELISA:1:2000-1:10000, IHC:1:20-1:200

**Protein Background:**

May be involved in regulation of intracellular signaling pathways during development. Specifically thought to play a role in canonical and/or non-canonical Wnt signaling pathways through interaction with DSH (Dishevelled) family proteins.

**Gene ID:**

DACT3

**Uniprot**

Q96B18

**Synonyms:**

Dapper homolog 3 (Antagonist of beta-catenin Dapper homolog 3) (Arginine-rich region 1 protein) (Dapper antagonist of catenin 3), DACT3, RRR1

**Immunogen:**

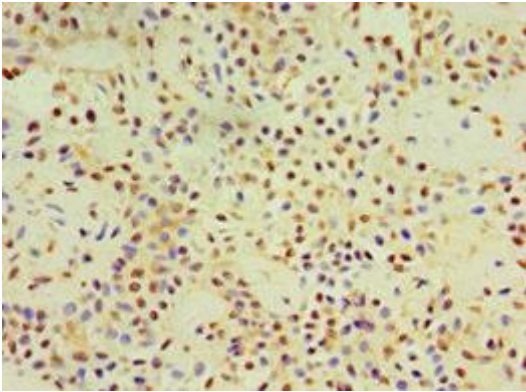
Recombinant Human Dapper homolog 3 protein (1-160AA).

**Storage:**

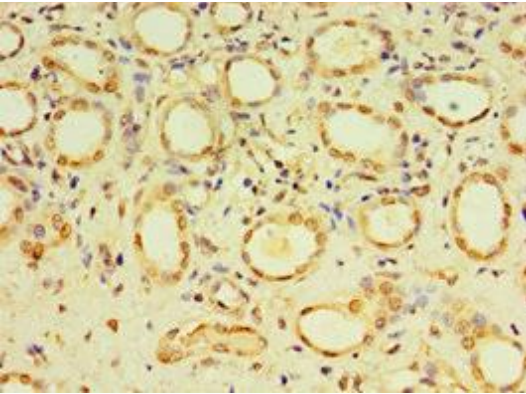
PBS with 0.02% sodium azide, 50% glycerol, pH7.3.

## Product Images

---



Immunohistochemistry of paraffin-embedded human breast cancer using PACO43724 at dilution of 1:100.



Immunohistochemistry of paraffin-embedded human kidney tissue using PACO43724 at dilution of 1:100.