

# CST4 Antibody



PACO43716

---

## Product Information

**Size:**

50ul

**Reactivity:**

Human

**Source:**

Rabbit

**Isotype:**

IgG

**Applications:**

ELISA, IHC

**Recommended dilutions:**

ELISA:1:2000-1:10000, IHC:1:20-1:200

**Protein Background:**

This protein strongly inhibits papain and ficin, partially inhibits stem bromelain and bovine cathepsin C, but does not inhibit porcine cathepsin B or clostripain. Papain is inhibited non-competitively.

**Gene ID:**

CST4

**Uniprot**

P01036

**Synonyms:**

Cystatin-S (Cystatin-4) (Cystatin-SA-III) (Salivary acid, c protein 1), CST4

**Immunogen:**

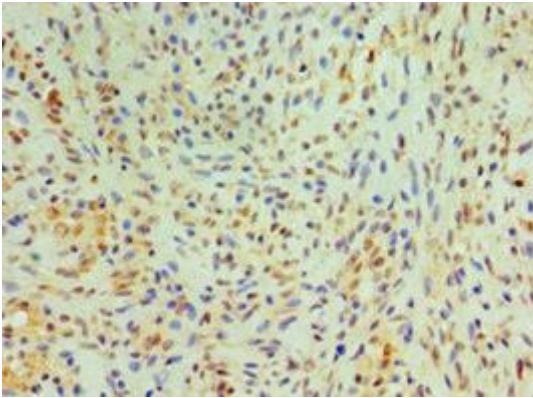
Recombinant Human Cystatin-S protein (21-141AA).

**Storage:**

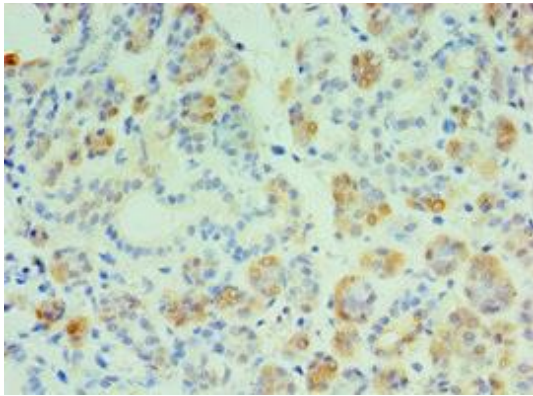
PBS with 0.02% sodium azide, 50% glycerol, pH7.3.

## Product Images

---



Immunohistochemistry of paraffin-embedded human breast cancer using PACO43716 at dilution of 1:100.



Immunohistochemistry of paraffin-embedded human salivary gland tissue using PACO43716 at dilution of 1:100.