

PACO43714

---

## Product Information

**Size:**

50ul

**Reactivity:**

Human

**Source:**

Rabbit

**Isotype:**

IgG

**Applications:**

ELISA, IHC

**Recommended dilutions:**

ELISA:1:2000-1:10000, IHC:1:20-1:200

**Protein Background:**

Carboxypeptidase that catalyzes the release of a C-terminal amino acid, but has little or no action with -Asp, -Glu, -Arg, -Lys or -Pro.

**Gene ID:**

CPA1

**Uniprot**

P15085

**Synonyms:**

Carboxypeptidase A1 (EC 3.4.17.1), CPA1, CPA

**Immunogen:**

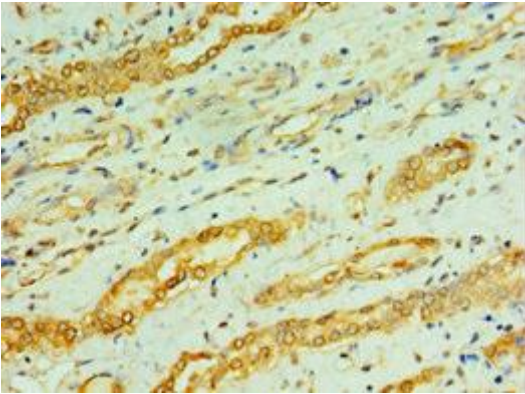
Recombinant Human Carboxypeptidase A1 protein (111-419AA).

**Storage:**

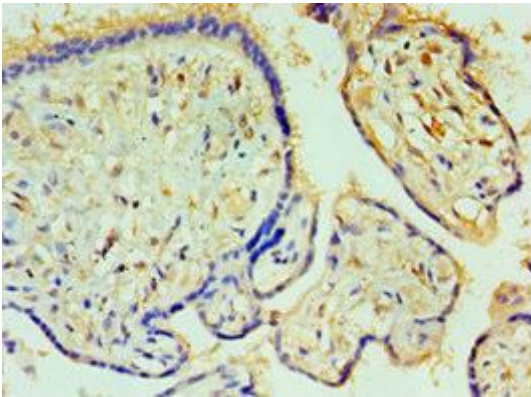
PBS with 0.02% sodium azide, 50% glycerol, pH7.3.

## Product Images

---



Immunohistochemistry of paraffin-embedded human kidney tissue using PACO43714 at dilution of 1:100.



Immunohistochemistry of paraffin-embedded human placenta tissue using PACO43714 at dilution of 1:100.