

Product Information

Size:

50ul

Reactivity:

Human

Source:

Rabbit

Isotype:

IgG

Applications:

ELISA, IHC

Recommended dilutions:

ELISA:1:2000-1:10000, IHC:1:20-1:200

Protein Background:

Can reduce the dialdehyde protein-binding form of aflatoxin B1 (AFB1) to the non-binding AFB1 dialcohol. May be involved in protection of liver against the toxic and carcinogenic effects of AFB1, a potent hepatocarcinogen.

Gene ID:

AKR7A3

Uniprot

O95154

Synonyms:

Aflatoxin B1 aldehyde reductase member 3 (EC 1) (AFB1 aldehyde reductase 2) (AFB1-AR 2), AKR7A3, AFAR2

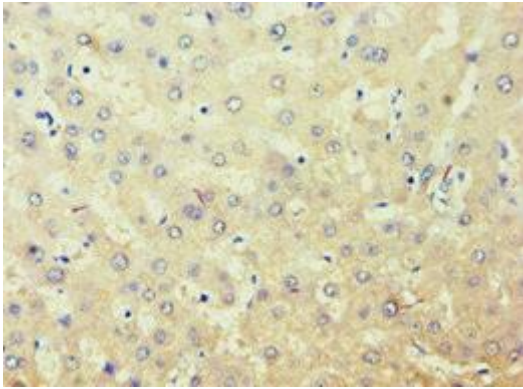
Immunogen:

Recombinant Human Aflatoxin B1 aldehyde reductase member 3 protein (1-331AA).

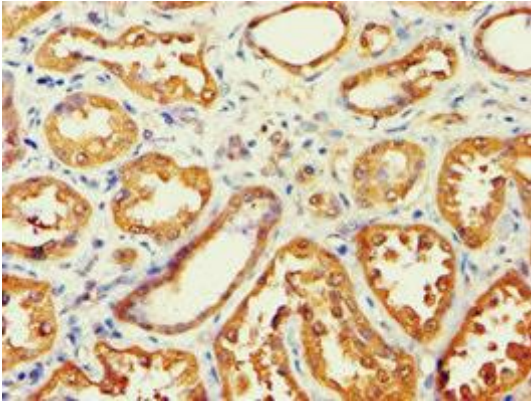
Storage:

PBS with 0.02% sodium azide, 50% glycerol, pH7.3.

Product Images



Immunohistochemistry of paraffin-embedded human liver tissue using PACO43705 at dilution of 1:100.



Immunohistochemistry of paraffin-embedded human kidney tissue using PACO43705 at dilution of 1:100.