

PACO43693

Product Information

Size:

50ul

Reactivity:

Human

Source:

Rabbit

Isotype:

IgG

Applications:

ELISA, IHC

Recommended dilutions:

ELISA:1:2000-1:10000, IHC:1:20-1:200

Protein Background:

Contributes to mitotic spindle assembly, maintenance of centrosome integrity and completion of cytokinesis as part of the HAUS augmin-like complex.

Gene ID:

HAUS3

Uniprot

Q68CZ6

Synonyms:

HAUS augmin-like complex subunit 3, HAUS3, C4orf15

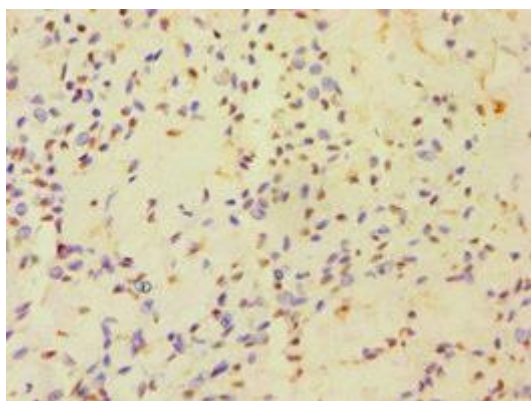
Immunogen:

Recombinant Human HAUS augmin-like complex subunit 3 protein (384-603AA).

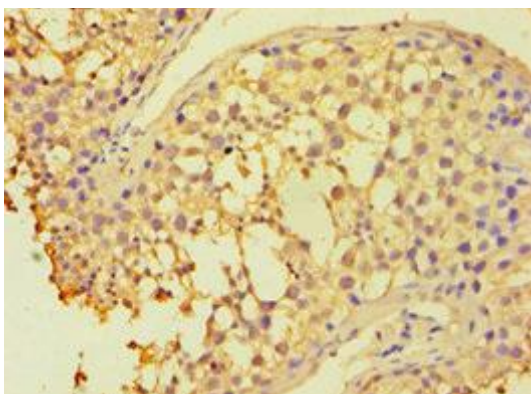
Storage:

PBS with 0.02% sodium azide, 50% glycerol, pH7.3.

Product Images



Immunohistochemistry of paraffin-embedded human breast cancer using PACO43693 at dilution of 1:100.



Immunohistochemistry of paraffin-embedded human testis tissue using PACO43693 at dilution of 1:100.