

# HAUS4 Antibody



PACO43692

---

## Product Information

**Size:**

50ul

**Reactivity:**

Human, Rat

**Source:**

Rabbit

**Isotype:**

IgG

**Applications:**

ELISA, WB, IHC

**Recommended dilutions:**

ELISA:1:2000-1:10000, WB:1:500-1:2000,  
IHC:1:20-1:200

**Protein Background:**

Contributes to mitotic spindle assembly, maintenance of centrosome integrity and completion of cytokinesis as part of the HAUS augmin-like complex.

**Gene ID:**

HAUS4

**Uniprot**

Q9H6D7

**Synonyms:**

HAUS augmin-like complex subunit 4, HAUS4, C14orf94

**Immunogen:**

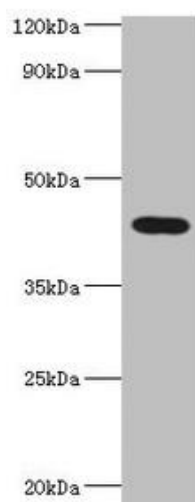
Recombinant Human HAUS augmin-like complex subunit 4 protein (1-363AA).

**Storage:**

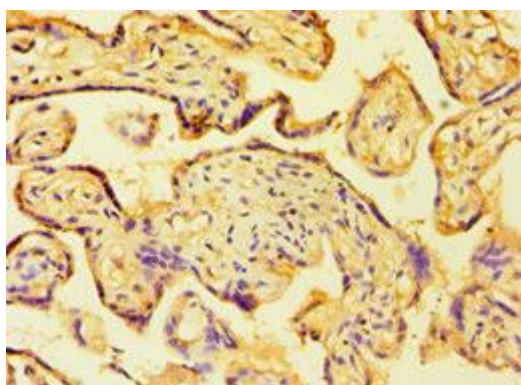
PBS with 0.02% sodium azide, 50% glycerol, pH7.3.

## Product Images

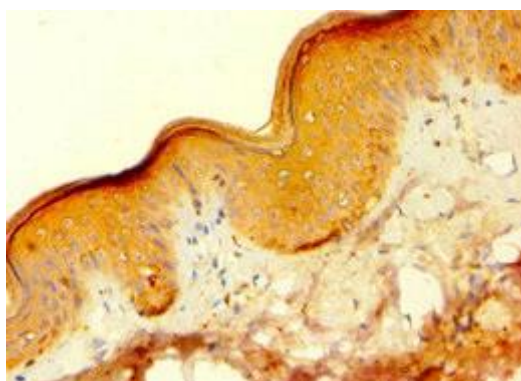
---



Western blot. All lanes: HAUS augmin-like complex subunit 4 antibody at 6 $\mu$ g/ml + Rat brain tissue. Secondary. Goat polyclonal to rabbit IgG at 1/10000 dilution. Predicted band size: 43, 28, 29, 38 kDa. Observed band size: 43 kDa.



Immunohistochemistry of paraffin-embedded human placenta tissue using PACO43692 at dilution of 1:100.



Immunohistochemistry of paraffin-embedded human skin tissue using PACO43692 at dilution of 1:100.