

PACO43691

Product Information

Size:

50ul

Reactivity:

Human

Source:

Rabbit

Isotype:

IgG

Applications:

ELISA, IHC

Recommended dilutions:

ELISA:1:2000-1:10000, IHC:1:20-1:200

Protein Background:

Contributes to mitotic spindle assembly, maintenance of centrosome integrity and completion of cytokinesis as part of the HAUS augmin-like complex.

Gene ID:

HAUS4

Uniprot

Q9H6D7

Synonyms:

HAUS augmin-like complex subunit 4, HAUS4, C14orf94

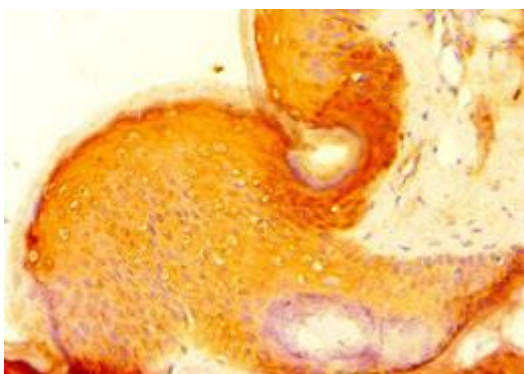
Immunogen:

Recombinant Human HAUS augmin-like complex subunit 4 protein (1-363AA).

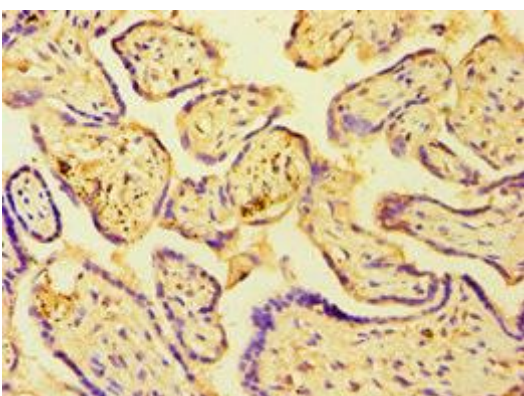
Storage:

PBS with 0.02% sodium azide, 50% glycerol, pH7.3.

Product Images



Immunohistochemistry of paraffin-embedded human skin tissue using PACO43691 at dilution of 1:100.



Immunohistochemistry of paraffin-embedded human placenta tissue using PACO43691 at dilution of 1:100.