

ANXA8L1 Antibody



PACO43674

Product Information

Size:

50ul

Reactivity:

Human

Source:

Rabbit

Isotype:

IgG

Applications:

ELISA, WB, IHC

Recommended dilutions:

ELISA:1:2000-1:10000, WB:1:200-1:1000,
IHC:1:20-1:200

Protein Background:

Gene ID:

ANXA8L1

Uniprot

Q5VT79

Synonyms:

Annexin A8-like protein 1, ANXA8L1, ANXA8L2

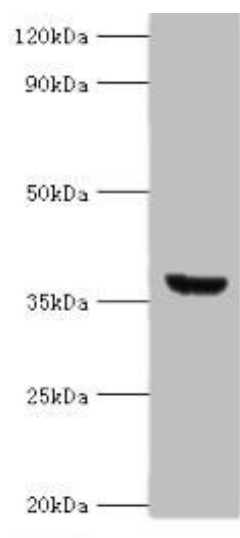
Immunogen:

Recombinant Human Annexin A8-like protein 1 protein (1-276AA).

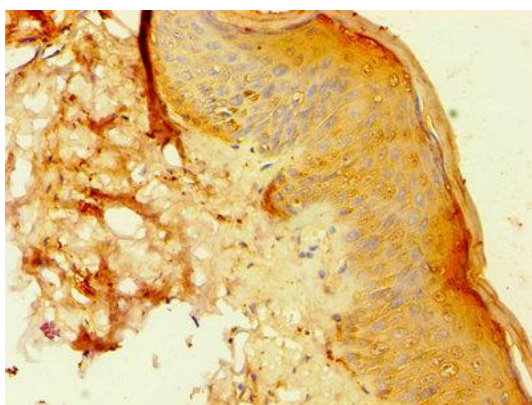
Storage:

PBS with 0.02% sodium azide, 50% glycerol, pH7.3.

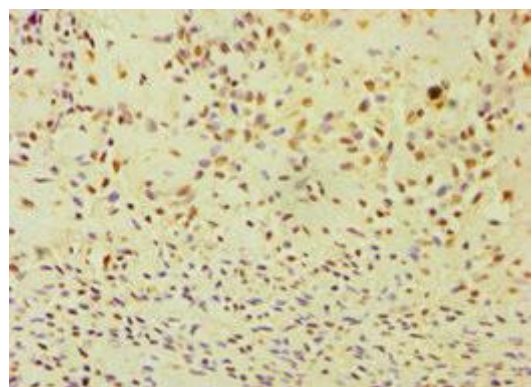
Product Images



Western blot. All lanes: ANXA8L2 antibody at 18 μ g/ml + HepG2 whole cell lysate. Secondary. Goat polyclonal to rabbit IgG at 1/10000 dilution. Predicted band size: 37, 31 kDa. Observed band size: 37 kDa.



Immunohistochemistry of paraffin-embedded human skin tissue using PACO43674 at dilution of 1:100.



Immunohistochemistry of paraffin-embedded human breast cancer using PACO43674 at dilution of 1:100.