

PACO43668

Product Information

Size:

50ul

Reactivity:

Human

Source:

Rabbit

Isotype:

IgG

Applications:

ELISA, WB, IHC, IP

Recommended dilutions:

ELISA:1:2000-1:10000, WB:1:1000-1:5000,
IHC:1:20-1:200, IP:1:200-1:2000

Protein Background:

Sulfotransferase that utilizes 3'-phospho-5'-adenylyl sulfate (PAPS) as sulfonate donor to catalyze the sulfate conjugation of many hormones, neurotransmitters, drugs and xenobiotic compounds. Sulfonation increases the water solubility of most compounds, and therefore their renal excretion, but it can also result in bioactivation to form active metabolites. Sulfates hydroxysteroids like DHEA. Isoform 1 preferentially sulfonates cholesterol, and isoform 2 avidly sulfonates pregnenolone but not cholesterol.

Gene ID:

SULT2B1

Uniprot

O00204

Synonyms:

Sulfotransferase family cytosolic 2B member 1 (ST2B1) (Sulfotransferase 2B1) (EC 2.8.2.2) (Alcohol sulfotransferase) (Hydroxysteroid sulfotransferase 2), SULT2B1, HSST2

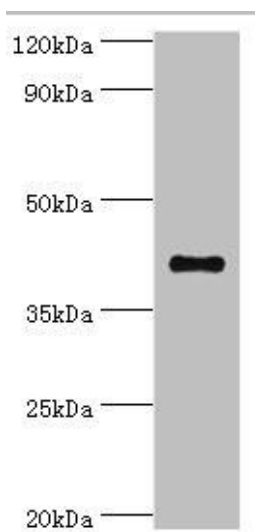
Immunogen:

Recombinant Human Sulfotransferase family cytosolic 2B member 1 protein (1-365AA).

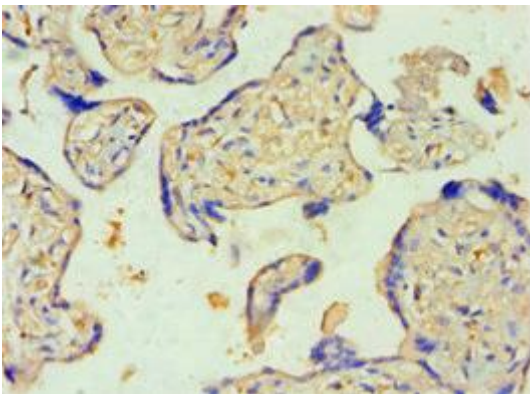
Storage:

PBS with 0.02% sodium azide, 50% glycerol, pH7.3.

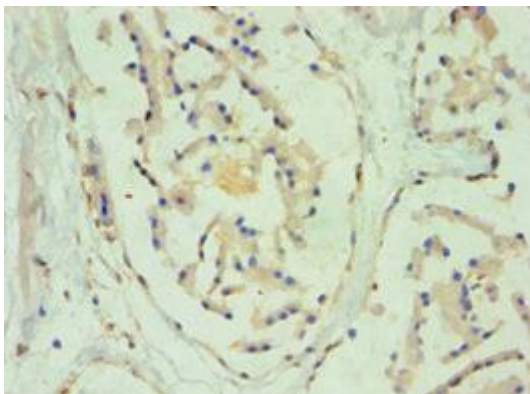
Product Images



Western blot. All lanes: Sulfotransferase family cytosolic 2B member 1 antibody at 4 μ g/ml + MCF-7 whole cell lysate. Secondary. Goat polyclonal to rabbit IgG at 1/10000 dilution. Predicted band size: 42, 40 kDa. Observed band size: 42 kDa.



Immunohistochemistry of paraffin-embedded human placenta tissue using PACO43668 at dilution of 1:100.



Immunohistochemistry of paraffin-embedded human prostate tissue using PACO43668 at dilution of 1:100.