

PACO43666

Product Information

Size:

50ul

Reactivity:

Human

Source:

Rabbit

Isotype:

IgG

Applications:

ELISA, IHC

Recommended dilutions:

ELISA:1:2000-1:10000, IHC:1:20-1:200

Protein Background:

Integrin alpha-9/beta-1 (ITGA9: ITGB1) is a receptor for VCAM1, cytotactin and osteopontin. It recognizes the sequence A-E-I-D-G-I-E-L in cytotactin.

Gene ID:

ITGA9

Uniprot

Q13797

Synonyms:

Integrin alpha-9 (Integrin alpha-RLC), ITGA9

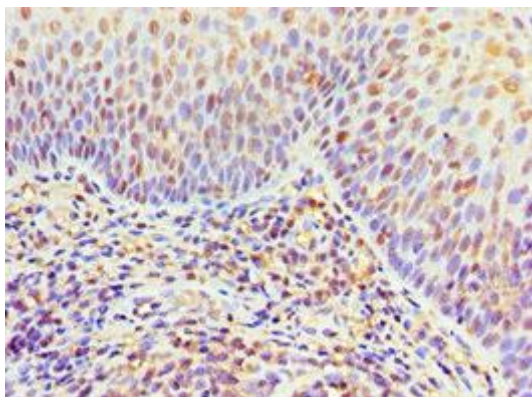
Immunogen:

Recombinant Human Integrin alpha-9 protein (30-250AA).

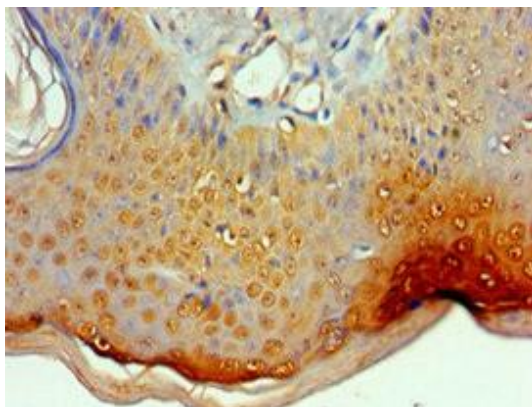
Storage:

PBS with 0.02% sodium azide, 50% glycerol, pH7.3.

Product Images



Immunohistochemistry of paraffin-embedded human tonsil tissue using PACO43666 at dilution of 1:100.



Immunohistochemistry of paraffin-embedded human skin tissue using PACO43666 at dilution of 1:100.