

PACO43665

---

## Product Information

**Size:**

50ul

**Reactivity:**

Human

**Source:**

Rabbit

**Isotype:**

IgG

**Applications:**

ELISA, IHC

**Recommended dilutions:**

ELISA:1:2000-1:10000, IHC:1:20-1:200

**Protein Background:**

Granulocyte/macrophage colony-stimulating factors are cytokines that act in hematopoiesis by controlling the production, differentiation, and function of 2 related white cell populations of the blood, the granulocytes and the monocytes-macrophages. This CSF induces granulocytes, macrophages, mast cells, stem cells, erythroid cells, eosinophils and megakaryocytes.

**Gene ID:**

IL3

**Uniprot**

P08700

**Synonyms:**

Interleukin-3 (IL-3) (Hematopoietic growth factor) (Mast cell growth factor) (MCGF) (Multipotential colony-stimulating factor) (P-cell-stimulating factor), IL3

**Immunogen:**

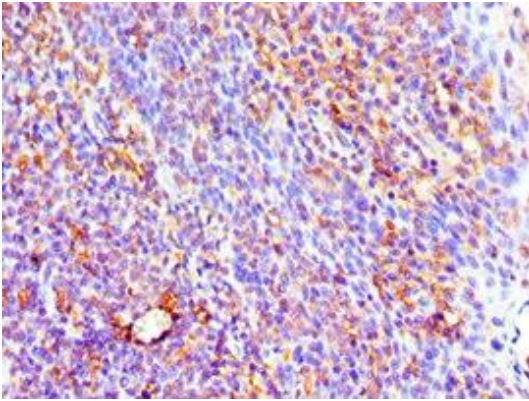
Recombinant Human Interleukin-3 protein (20-152AA).

**Storage:**

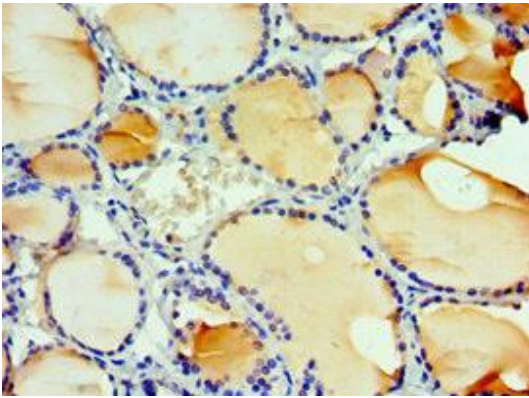
PBS with 0.02% sodium azide, 50% glycerol, pH7.3.

## Product Images

---



Immunohistochemistry of paraffin-embedded human tonsil tissue using PACO43665 at dilution of 1:100.



Immunohistochemistry of paraffin-embedded human thyroid tissue using PACO43665 at dilution of 1:100.