

Product Information

Size:

50ul

Reactivity:

Human

Source:

Rabbit

Isotype:

IgG

Applications:

ELISA, IHC

Recommended dilutions:

ELISA:1:2000-1:10000, IHC:1:20-1:200

Protein Background:

Ghrelin is the ligand for growth hormone secretagogue receptor type 1 (GHSR). Induces the release of growth hormone from the pituitary. Has an appetite-stimulating effect, induces adiposity and stimulates gastric acid, secretion. Involved in growth regulation. Obestatin may be the ligand for GPR39. May have an appetite-reducing effect resulting in decreased food intake. May reduce gastric emptying activity and jejunal motility.

Gene ID:

GHRL

Uniprot

Q9UBU3

Synonyms:

Appetite-regulating hormone (Growth hormone secretagogue) (Growth hormone-releasing peptide) (Motilin-related peptide) (Protein M46) [Cleaved into: Ghrelin-27; Ghrelin-28 (Ghrelin); Obestatin], GHRL, MTLRP

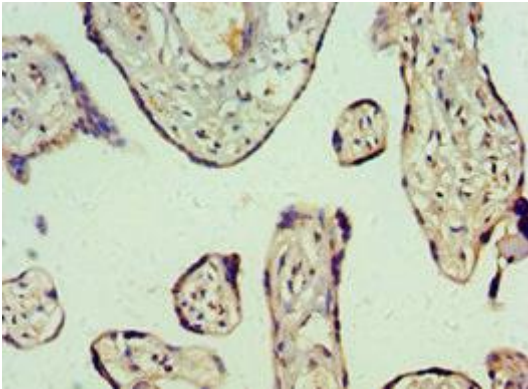
Immunogen:

Recombinant Human Appetite-regulating hormone protein (1-117AA).

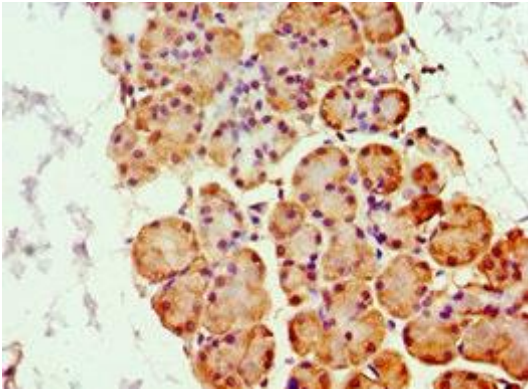
Storage:

PBS with 0.02% sodium azide, 50% glycerol, pH7.3.

Product Images



Immunohistochemistry of paraffin-embedded human placenta tissue using PACO43662 at dilution of 1:100.



Immunohistochemistry of paraffin-embedded human pancreatic tissue using PACO43662 at dilution of 1:100.