

PACO43656

---

## Product Information

**Size:**

50ul

**Reactivity:**

Human, Rat

**Source:**

Rabbit

**Isotype:**

IgG

**Applications:**

ELISA, WB

**Recommended dilutions:**

ELISA:1:2000-1:10000, WB:1:500-1:2000

**Protein Background:**

Cytokine that may play a role in anterior neural induction and somite formation during embryogenesis in part through a BMP-inhibitory mechanism. Can regulate Nodal signaling during gastrulation as well as the formation and patterning of the primitive streak.

**Gene ID:**

CER1

**Uniprot**

O95813

**Synonyms:**

Cerberus (Cerberus-related protein) (DAN domain family member 4), CER1, DAND4

**Immunogen:**

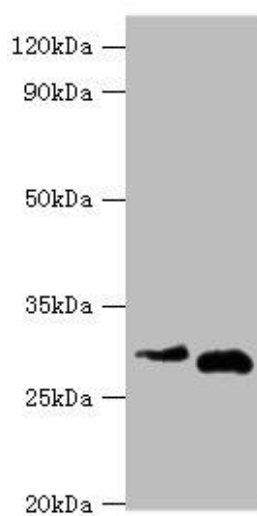
Recombinant Human Cerberus protein (18-267AA).

**Storage:**

PBS with 0.02% sodium azide, 50% glycerol, pH7.3.

## Product Images

---



Western blot. All lanes: Cerberus antibody at 2 $\mu$ g/ml. Lane 1: HeLa whole cell lysate. Lane 2: Rat kidney tissue. Secondary: Goat polyclonal to rabbit IgG at 1/10000 dilution. Predicted band size: 30 kDa. Observed band size: 30 kDa.