

CALML5 Antibody



PACO43652

Product Information

Size:

50ul

Reactivity:

Human

Source:

Rabbit

Isotype:

IgG

Applications:

ELISA, WB, IHC

Recommended dilutions:

ELISA:1:2000-1:10000, WB:1:200-1:1000,
IHC:1:20-1:200

Protein Background:

Binds calcium. May be involved in terminal differentiation of keratinocytes.

Gene ID:

CALML5

Uniprot

Q9NZT1

Synonyms:

Calmodulin-like protein 5 (Calmodulin-like skin protein), CALML5, CLSP

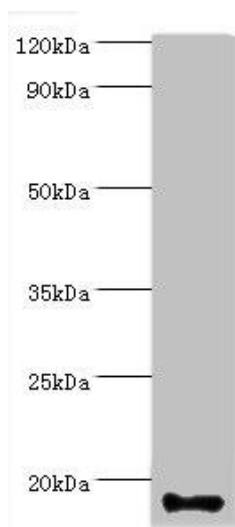
Immunogen:

Recombinant Human Calmodulin-like protein 5 protein (1-146AA).

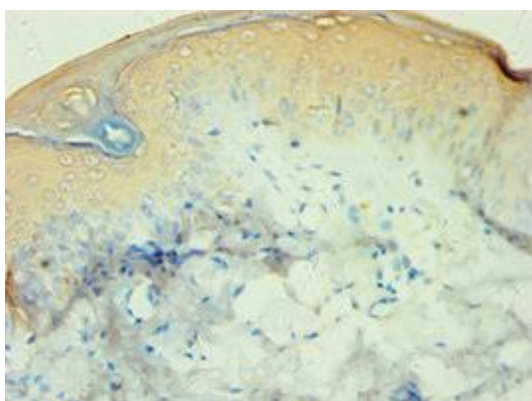
Storage:

PBS with 0.02% sodium azide, 50% glycerol, pH7.3.

Product Images



Western blot. All lanes: Calmodulin-like protein 5 antibody at 12 μ g/ml + A431 whole cell lysate. Secondary. Goat polyclonal to rabbit IgG at 1/10000 dilution. Predicted band size: 16 kDa. Observed band size: 16 kDa.



Immunohistochemistry of paraffin-embedded human skin tissue using PACO43652 at dilution of 1:100.