

# CALML5 Antibody



PACO43651

---

## Product Information

**Size:**

50ul

**Reactivity:**

Human

**Source:**

Rabbit

**Isotype:**

IgG

**Applications:**

ELISA, IHC

**Recommended dilutions:**

ELISA:1:2000-1:10000, IHC:1:20-1:200

**Protein Background:**

Binds calcium. May be involved in terminal differentiation of keratinocytes.

**Gene ID:**

CALML5

**Uniprot**

Q9NZT1

**Synonyms:**

Calmodulin-like protein 5 (Calmodulin-like skin protein), CALML5, CLSP

**Immunogen:**

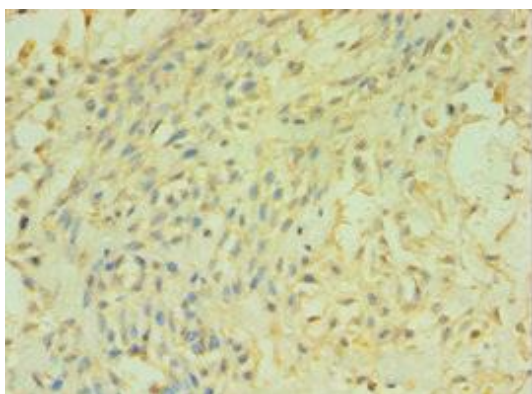
Recombinant Human Calmodulin-like protein 5 protein (1-146AA).

**Storage:**

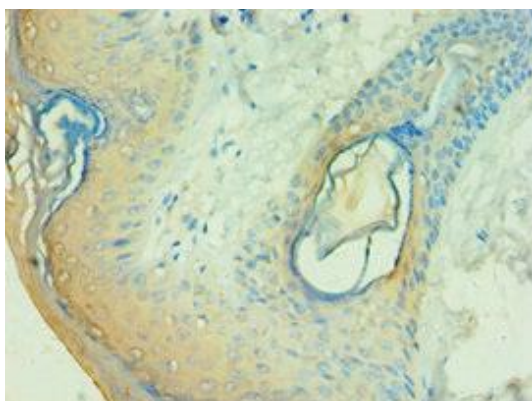
PBS with 0.02% sodium azide, 50% glycerol, pH7.3.

## Product Images

---



Immunohistochemistry of paraffin-embedded human breast cancer using PACO43651 at dilution of 1:100.



Immunohistochemistry of paraffin-embedded human skin tissue using PACO43651 at dilution of 1:100.