

# SMYD4 Antibody



PACO43643

---

## Product Information

**Size:**

50ul

**Reactivity:**

Human

**Source:**

Rabbit

**Isotype:**

IgG

**Applications:**

ELISA, IHC

**Recommended dilutions:**

ELISA:1:2000-1:10000, IHC:1:20-1:200

**Protein Background:**

**Gene ID:**

SMYD4

**Uniprot**

Q8IYR2

**Synonyms:**

SET and MYND domain-containing protein 4 (EC 2.1.1. -), SMYD4, KIAA1936

**Immunogen:**

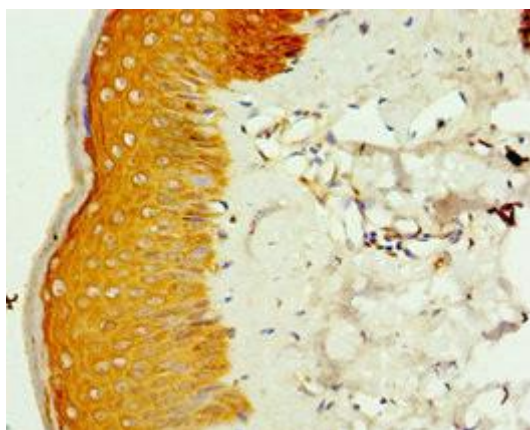
Recombinant Human SET and MYND domain-containing protein 4 protein (1-260AA).

**Storage:**

PBS with 0.02% sodium azide, 50% glycerol, pH7.3.

## Product Images

---



Immunohistochemistry of paraffin-embedded human skin tissue using PACO43643 at dilution of 1:100.