

Product Information

Size:

50ul

Reactivity:

Human

Source:

Rabbit

Isotype:

IgG

Applications:

ELISA, WB, IHC

Recommended dilutions:

ELISA:1:2000-1:10000, WB:1:500-1:5000,
IHC:1:20-1:200

Protein Background:

DNA-dependent RNA polymerase catalyzes the transcription of DNA into RNA using the four ribonucleoside triphosphates as substrates. Common core component of RNA polymerases I and III which synthesize ribosomal RNA precursors and small RNAs, such as 5S rRNA and tRNAs, respectively.

Gene ID:

POLR1D

Uniprot

P0DPB6

Synonyms:

DNA-directed RNA polymerases I and III subunit RPAC2 (RNA polymerases I and III subunit AC2) (AC19) (DNA-directed RNA polymerase I subunit D) (RNA polymerase I 16 kDa subunit) (RPA16) (RPC16) (hRPA19), POLR1D

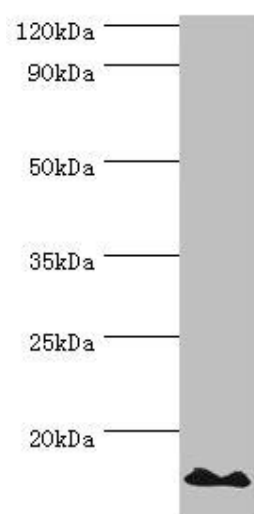
Immunogen:

Recombinant Human DNA-directed RNA polymerases I and III subunit RPAC2 protein (1-133AA).

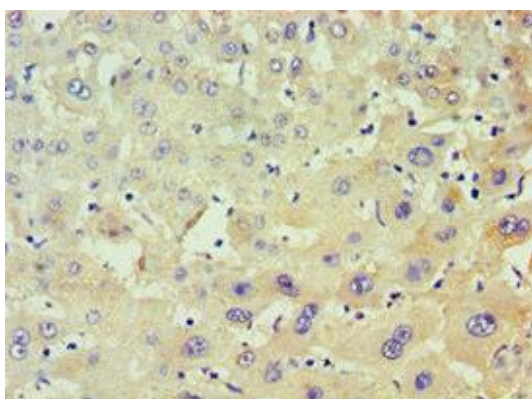
Storage:

PBS with 0.02% sodium azide, 50% glycerol, pH7.3.

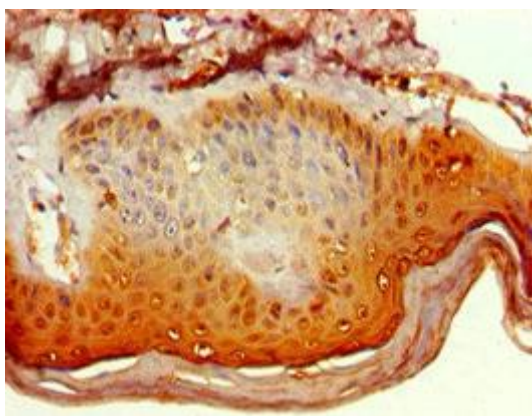
Product Images



Western blot. All lanes: DNA-directed RNA polymerases I and III subunit RPAC2 antibody at 10 μ g/ml + Jurkat whole cell lysate. Secondary. Goat polyclonal to rabbit IgG at 1/10000 dilution. Predicted band size: 16, 15 kDa. Observed band size: 16 kDa.



Immunohistochemistry of paraffin-embedded human liver tissue using PACO43636 at dilution of 1:100.



Immunohistochemistry of paraffin-embedded human skin tissue using PACO43636 at dilution of 1:100.