

SULT1A3 Antibody



PACO43619

Product Information

Size:

50ul

Reactivity:

Human, Mouse

Source:

Rabbit

Isotype:

IgG

Applications:

ELISA, WB, IHC

Recommended dilutions:

ELISA:1:2000-1:10000, WB:1:500-1:2000,
IHC:1:20-1:200

Protein Background:

Sulfotransferase that utilizes 3'-phospho-5'-adenylyl sulfate (PAPS) as sulfonate donor to catalyze the sulfate conjugation of phenolic monoamines (neurotransmitters such as dopamine, norepinephrine and serotonin) and phenolic and catechol drugs.

Gene ID:

SULT1A3

Uniprot

P0DMM9

Synonyms:

Sulfotransferase 1A3 (ST1A3) (EC 2.8.2.1) (Aryl sulfotransferase 1A3/1A4) (Catecholamine-sulfating phenol sulfotransferase) (HAST3) (M-PST) (Monoamine-sulfating phenol sulfotransferase) (Placental estrogen sulfotransferase) (Sulfotransferase 1A3/1A4) (Sulfotransferase, monoamine-preferring) (Thermolabile phenol sulfotransferase) (TL-PST), SULT1A3, STM

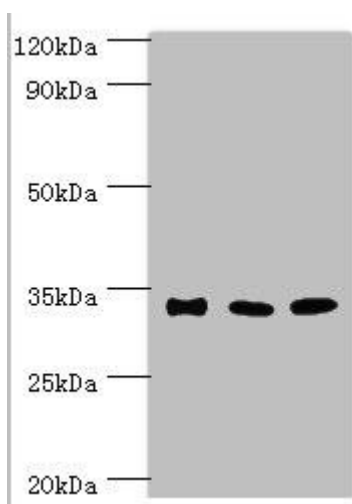
Immunogen:

Recombinant Human Sulfotransferase 1A3 protein (1-295AA).

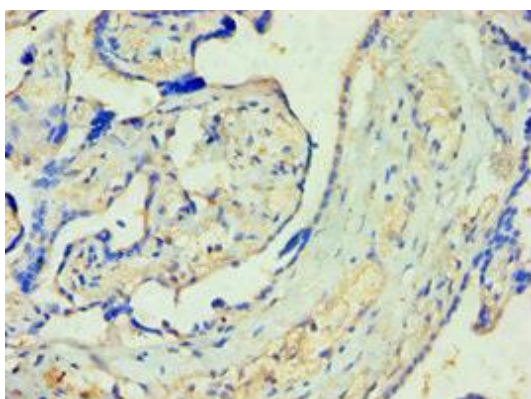
Storage:

PBS with 0.02% sodium azide, 50% glycerol, pH7.3.

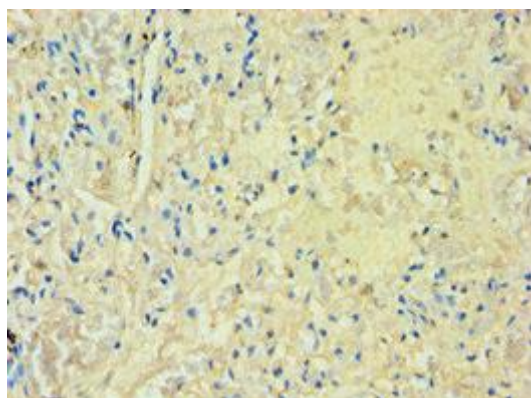
Product Images



Western blot. All lanes: Sulfotransferase 1A3 antibody at 10 μ g/ml. Lane 1: A549 whole cell lysate. Lane 2: Mouse liver tissue. Lane 2: Mouse kidney tissue. Secondary: Goat polyclonal to rabbit IgG at 1/10000 dilution. Predicted band size: 35, 23 kDa. Observed band size: 35 kDa.



Immunohistochemistry of paraffin-embedded human placenta tissue using PACO43619 at dilution of 1:100.



Immunohistochemistry of paraffin-embedded human lung tissue using PACO43619 at dilution of 1:100.