

### Product Information

**Size:**

50ul

**Reactivity:**

Human, Mouse, Rat

**Source:**

Rabbit

**Isotype:**

IgG

**Applications:**

ELISA, WB, IHC

**Recommended dilutions:**

ELISA:1:2000-1:10000, WB:1:500-1:2000,  
IHC:1:20-1:200

**Protein Background:**

Neuronal calcium sensor, regulator of G protein-coupled receptor phosphorylation in a calcium dependent manner. Directly regulates GRK1 (RHOK), but not GRK2 to GRK5. Can substitute for calmodulin. Stimulates PI4KB kinase activity. Involved in long-term synaptic plasticity through its interaction with PICK1. May also play a role in neuron differentiation through inhibition of the activity of N-type voltage-gated calcium channel.

**Gene ID:**

NCS1

**Uniprot**

P62166

**Synonyms:**

Neuronal calcium sensor 1 (NCS-1) (Frequenin homolog) (Frequenin-like protein) (Frequenin-like ubiquitous protein), NCS1, FLUP FREQ

**Immunogen:**

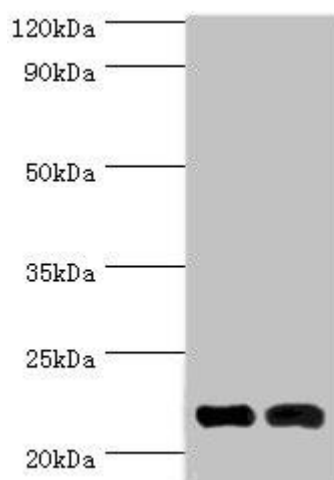
Recombinant Human Neuronal calcium sensor 1 protein (1-190AA).

**Storage:**

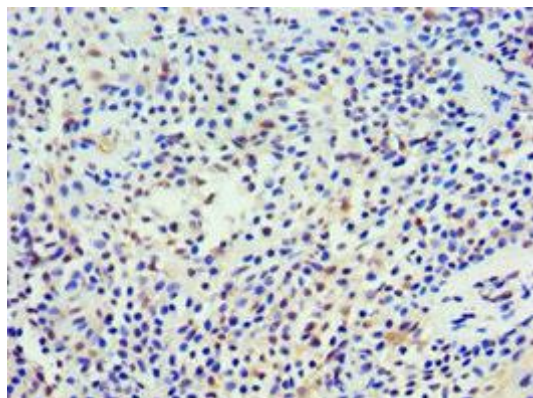
PBS with 0.02% sodium azide, 50% glycerol, pH7.3.

## Product Images

---



Western blot. All lanes: Neuronal calcium sensor 1 antibody at 10 $\mu$ g/ml. Lane 1: HeLa whole cell lysate. Lane 2: Rat kidney tissue. Secondary: Goat polyclonal to rabbit IgG at 1/10000 dilution. Predicted band size: 22, 20 kDa. Observed band size: 22 kDa.



Immunohistochemistry of paraffin-embedded human breast cancer using PACO43616 at dilution of 1:100.