

Product Information

Size:

50ul

Reactivity:

Human

Source:

Rabbit

Isotype:

IgG

Applications:

ELISA, IHC

Recommended dilutions:

ELISA:1:2000-1:10000, IHC:1:20-1:200

Protein Background:

Serine/threonine kinase that acts as a key regulator of ciliogenesis: controls the initiation of ciliogenesis by binding to the distal end of the basal body and promoting the removal of CCP110, which caps the mother centriole, leading to the recruitment of IFT proteins, which build the ciliary axoneme. Has some substrate preference for proteins that are already phosphorylated on a Tyr residue at the +2 position relative to the phosphorylation site. Able to phosphorylate tau on serines in vitro.

Gene ID:

TTBK2

Uniprot

Q6IQ55

Synonyms:

Tau-tubulin kinase 2 (EC 2.7.11.1), TTBK2, KIAA0847

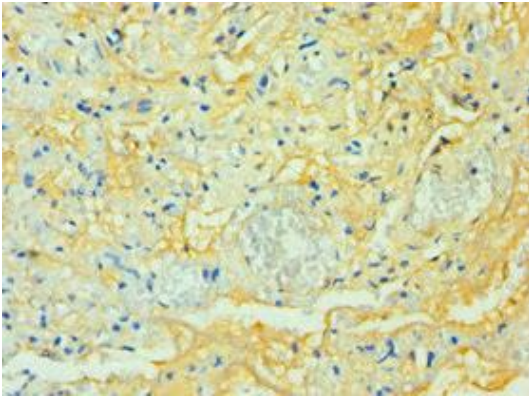
Immunogen:

Recombinant Human Tau-tubulin kinase 2 protein (1185-1244AA).

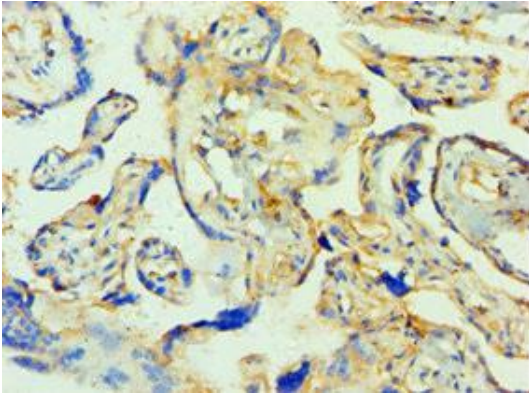
Storage:

PBS with 0.02% sodium azide, 50% glycerol, pH7.3.

Product Images



Immunohistochemistry of paraffin-embedded human lung tissue using PACO43568 at dilution of 1:100.



Immunohistochemistry of paraffin-embedded human placenta tissue using PACO43568 at dilution of 1:100.