

SERPINB1 Antibody



PACO43557

Product Information

Size:

50ul

Reactivity:

Human

Source:

Rabbit

Isotype:

IgG

Applications:

ELISA, WB, IHC

Recommended dilutions:

ELISA:1:2000-1:10000, WB:1:500-1:2000,
IHC:1:20-1:200

Protein Background:

Regulates the activity of the neutrophil proteases elastase, cathepsin G, proteinase-3, chymase, chymotrypsin, and kallikrein-3. Also functions as a potent intracellular inhibitor of granzyme H.

Gene ID:

SERPINB1

Uniprot

P30740

Synonyms:

Leukocyte elastase inhibitor (LEI) (Monocyte/neutrophil elastase inhibitor) (EI) (M/NEI) (Peptidase inhibitor 2) (PI-2) (Serpine B1), SERPINB1, ELANH2 MNEI PI2

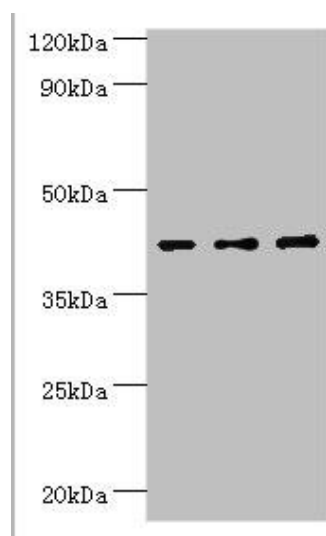
Immunogen:

Recombinant Human Leukocyte elastase inhibitor protein (100-379AA).

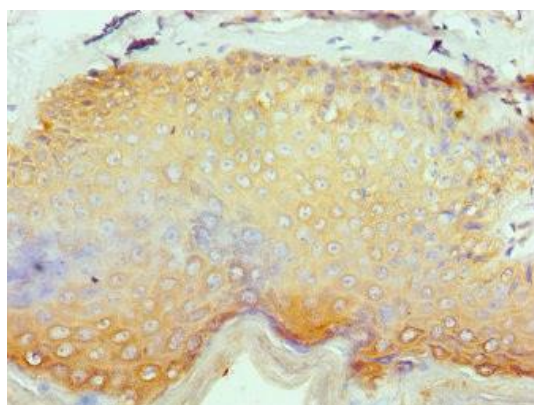
Storage:

PBS with 0.02% sodium azide, 50% glycerol, pH7.3.

Product Images



Western blot. All lanes: Leukocyte elastase inhibitor antibody at 4 μ g/ml. Lane 1: MCF-7 whole cell lysate. Lane 2: Hela whole cell lysate. Lane 3: HepG2 whole cell lysate. Secondary. Goat polyclonal to rabbit IgG at 1/10000 dilution. Predicted band size: 43, 27 kDa. Observed band size: 43 kDa.



Immunohistochemistry of paraffin-embedded human skin tissue using PACO43557 at dilution of 1:100.