

Product Information

Size:

50ul

Reactivity:

Human

Source:

Rabbit

Isotype:

IgG

Applications:

ELISA, IHC

Recommended dilutions:

ELISA:1:2000-1:10000, IHC:1:20-1:200

Protein Background:

In embryonic stem (ES) cells, plays a crucial role in the differentiation potential, particularly along the neural lineage, regulating gene induction and H3 'Lys-4' methylation at key developmental loci, including that mediated by retinoic acid, . As part of the MLL1/MLL complex, involved in mono-, di- and trimethylation at 'Lys-4' of histone H3. Histone H3 'Lys-4' methylation represents a specific tag for epigenetic transcriptional activation.

Gene ID:

RBBP5

Uniprot

Q15291

Synonyms:

Retinoblastoma-binding protein 5 (RBBP-5) (Retinoblastoma-binding protein RBQ-3), RBBP5, RBQ3

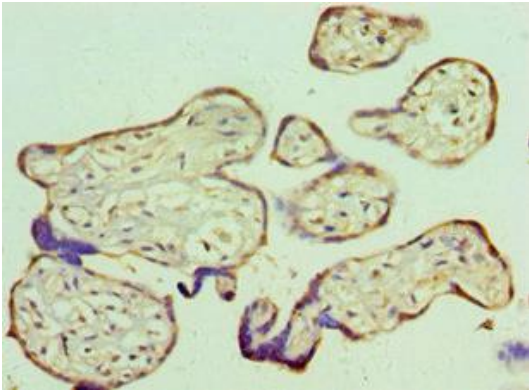
Immunogen:

Recombinant Human Retinoblastoma-binding protein 5 protein (319-538AA).

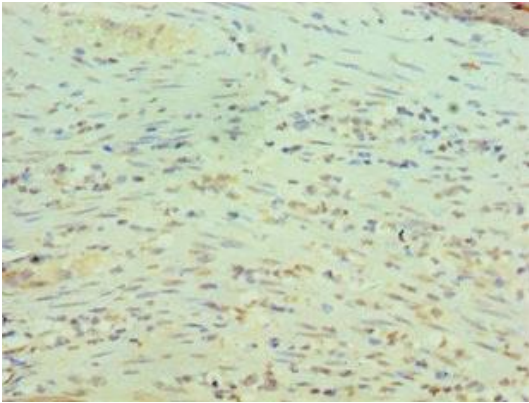
Storage:

PBS with 0.02% sodium azide, 50% glycerol, pH7.3.

Product Images



Immunohistochemistry of paraffin-embedded human placenta tissue using PACO43556 at dilution of 1:100.



Immunohistochemistry of paraffin-embedded human epityphlon tissue using PACO43556 at dilution of 1:100.