

Product Information

Size:

50ul

Reactivity:

Human

Source:

Rabbit

Isotype:

IgG

Applications:

ELISA, IHC

Recommended dilutions:

ELISA:1:2000-1:10000, IHC:1:20-1:200

Protein Background:

Involved in translocation of long-chain fatty acid, (LFCA) across the plasma membrane. Appears to be the principal fatty acid, transporter in small intestinal enterocytes. Plays a role in the formation of the epidermal barrier. Required for fat absorption in early embryogenesis. Has acyl-CoA ligase activity for long-chain and very-long-chain fatty acid, (VLCFAs). Indirectly inhibits RPE65 via substrate competition and via production of VLCFA derivatives like lignoceroyl-CoA. Prevents light-induced degeneration of rods and cones.

Gene ID:

SLC27A4

Uniprot

Q6P1M0

Synonyms:

Long-chain fatty acid, transport protein 4 (FATP-4) (Fatty acid, transport protein 4) (EC 6.2.1. -) (Solute carrier family 27 member 4), SLC27A4, ACSVL4 FATP4

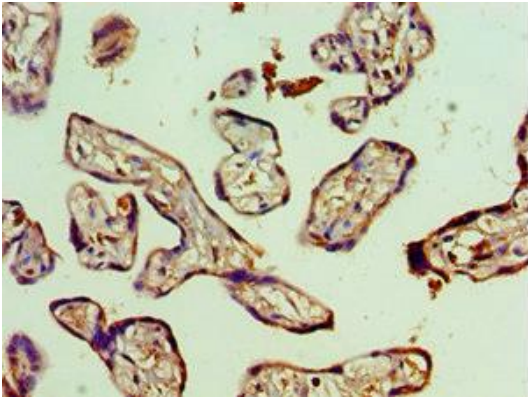
Immunogen:

Recombinant Human Long-chain fatty acid, transport protein 4 protein (494-643AA).

Storage:

PBS with 0.02% sodium azide, 50% glycerol, pH7.3.

Product Images



Immunohistochemistry of paraffin-embedded human placenta tissue using PACO43510 at dilution of 1:100.