

### Product Information

**Size:**

50ul

**Reactivity:**

Human, Mouse

**Source:**

Rabbit

**Isotype:**

IgG

**Applications:**

ELISA, WB, IHC

**Recommended dilutions:**

ELISA:1:2000-1:10000, WB:1:200-1:1000,  
IHC:1:20-1:200

**Protein Background:**

Involved in translocation of long-chain fatty acid, (LFCA) across the plasma membrane. Appears to be the principal fatty acid, transporter in small intestinal enterocytes. Plays a role in the formation of the epidermal barrier. Required for fat absorption in early embryogenesis. Has acyl-CoA ligase activity for long-chain and very-long-chain fatty acid, (VLCFAs). Indirectly inhibits RPE65 via substrate competition and via production of VLCFA derivatives like lignoceroyl-CoA. Prevents light-induced degeneration of rods and cones.

**Gene ID:**

SLC27A4

**Uniprot**

Q6P1M0

**Synonyms:**

Long-chain fatty acid, transport protein 4 (FATP-4) (Fatty acid, transport protein 4) (EC 6.2.1. -) (Solute carrier family 27 member 4), SLC27A4, ACSVL4 FATP4

**Immunogen:**

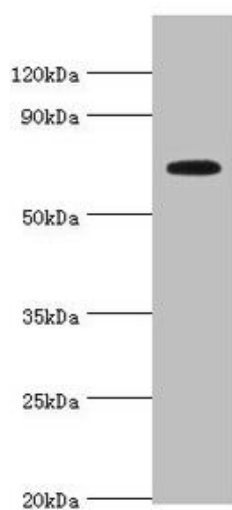
Recombinant Human Long-chain fatty acid, transport protein 4 protein (494-643AA).

**Storage:**

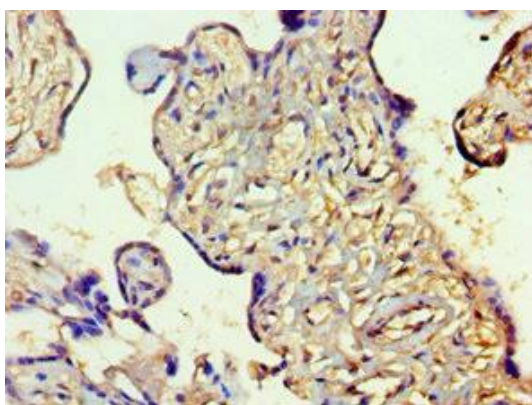
PBS with 0.02% sodium azide, 50% glycerol, pH7.3.

## Product Images

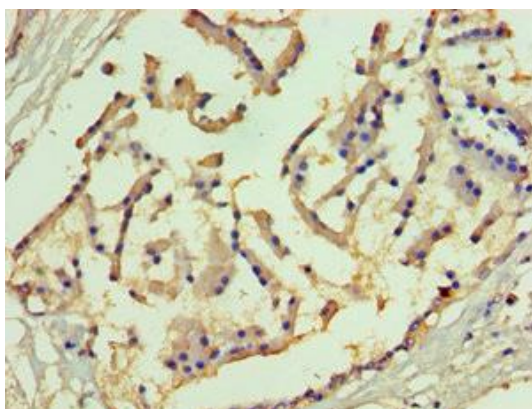
---



Western blot. All lanes: Long-chain fatty acid transport protein 4 antibody at 8 $\mu$ g/ml + Mouse heart tissue. Secondary. Goat polyclonal to rabbit IgG at 1/10000 dilution. Predicted band size: 73, 27 kDa. Observed band size: 73 kDa.



Immunohistochemistry of paraffin-embedded human placenta tissue using PACO43509 at dilution of 1:100.



Immunohistochemistry of paraffin-embedded human prostate tissue using PACO43509 at dilution of 1:100.