

CBR3 Antibody



PACO43504

Product Information

Size:

50ul

Reactivity:

Human

Source:

Rabbit

Isotype:

IgG

Applications:

ELISA, WB, IHC

Recommended dilutions:

ELISA:1:2000-1:10000, WB:1:500-1:2000,
IHC:1:20-1:200

Protein Background:

Has low NADPH-dependent oxidoreductase activity towards 4-benzoylpyridine and menadione (in vitro).

Gene ID:

CBR3

Uniprot

O75828

Synonyms:

Carbonyl reductase [NADPH] 3 (EC 1.1.1.184) (NADPH-dependent carbonyl reductase 3) (Short chain dehydrogenase/reductase family 21C member 2), CBR3

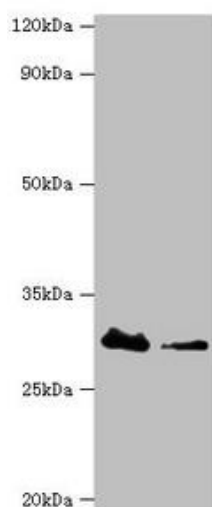
Immunogen:

Recombinant Human Carbonyl reductase [NADPH] 3 protein (118-277AA).

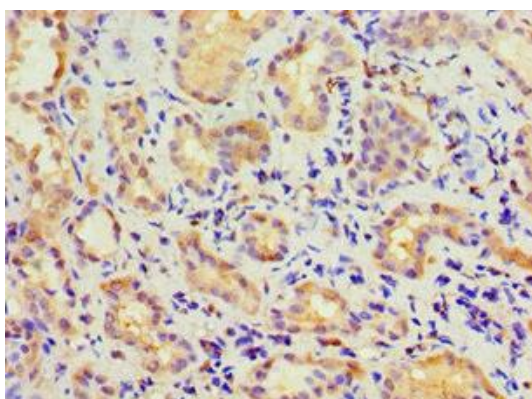
Storage:

PBS with 0.02% sodium azide, 50% glycerol, pH7.3.

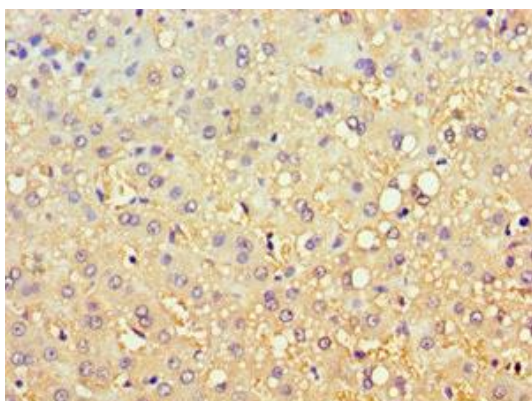
Product Images



Western blot. All lanes: Carbonyl reductase [NADPH] 3 antibody at 10 μ g/ml. Lane 1: HeLa whole cell lysate. Lane 2: K562 whole cell lysate. Secondary: Goat polyclonal to rabbit IgG at 1/10000 dilution. Predicted band size: 31 kDa. Observed band size: 31 kDa.



Immunohistochemistry of paraffin-embedded human kidney tissue using PACO43504 at dilution of 1:100.



Immunohistochemistry of paraffin-embedded human liver tissue using PACO43504 at dilution of 1:100.