

PACO43493

---

## Product Information

**Size:**

50ul

**Reactivity:**

Human

**Source:**

Rabbit

**Isotype:**

IgG

**Applications:**

ELISA, WB

**Recommended dilutions:**

ELISA:1:2000-1:10000, WB:1:200-1:1000

**Protein Background:**

May be involved in the metabolism of various pneumotoxicants including naphthalene. Is able to dealkylate ethoxycoumarin, propoxycoumarin, and pentoxycoumarin but possesses no activity toward ethoxyresorufin and only trace dearylation activity toward benzyloxyresorufin. Bioactivates 3-methylindole (3MI) by dehydrogenation to the putative electrophile 3-methylene-indolenine.

**Gene ID:**

CYP2F1

**Uniprot**

P24903

**Synonyms:**

Cytochrome P450 2F1 (EC 1.14.14.1) (CYPIIF1), CYP2F1

**Immunogen:**

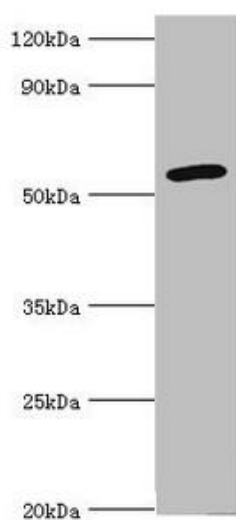
Recombinant Human Cytochrome P450 2F1 protein (100-290AA).

**Storage:**

PBS with 0.02% sodium azide, 50% glycerol, pH7.3.

## Product Images

---



Western blot. All lanes: Cytochrome P450 2F1 antibody at 8 $\mu$ g/ml + A549 whole cell lysate. Secondary. Goat polyclonal to rabbit IgG at 1/10000 dilution. Predicted band size: 56, 37 kDa. Observed band size: 56 kDa.