

# CSNK1A1L Antibody



PACO43491

---

## Product Information

**Size:**

50ul

**Reactivity:**

Human

**Source:**

Rabbit

**Isotype:**

IgG

**Applications:**

ELISA, WB, IHC

**Recommended dilutions:**

ELISA:1:2000-1:10000, WB:1:500-1:2000,  
IHC:1:20-1:200

**Protein Background:**

Casein kinases are operationally defined by their preferential utilization of acid, c proteins such as caseins as substrates. It can phosphorylate a large number of proteins. Participates in Wnt signaling.

**Gene ID:**

CSNK1A1L

**Uniprot**

Q8N752

**Synonyms:**

Casein kinase I isoform alpha-like (CKI-alpha-like) (EC 2.7.11.1) (CK1), CSNK1A1L

**Immunogen:**

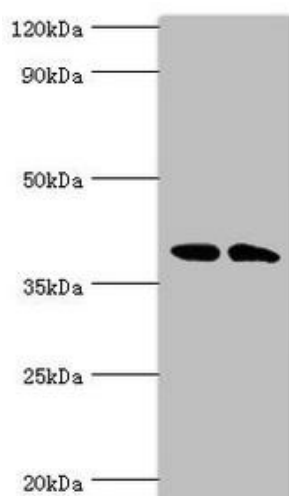
Recombinant Human Casein kinase I isoform alpha-like protein (1-337AA).

**Storage:**

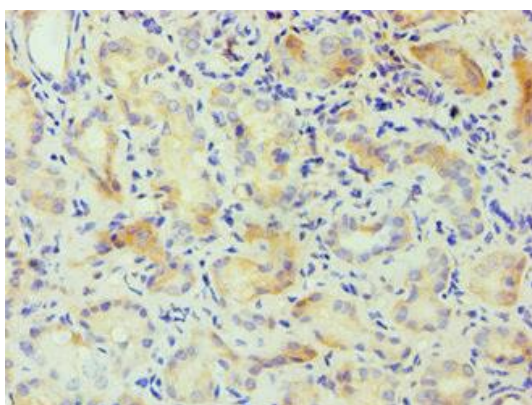
PBS with 0.02% sodium azide, 50% glycerol, pH7.3.

## Product Images

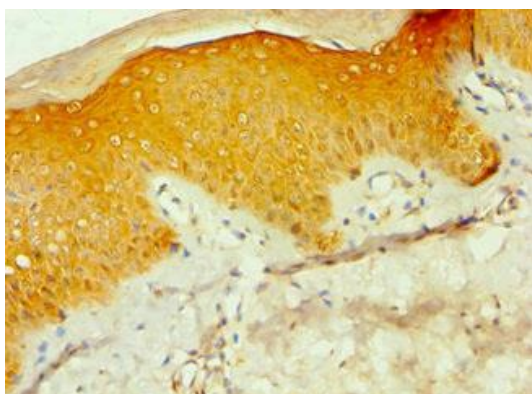
---



Western blot. All lanes: Casein kinase I isoform alpha-like antibody at 4 $\mu$ g/ml. Lane 1: K562 whole cell lysate. Lane 2: HeLa whole cell lysate. Secondary. Goat polyclonal to rabbit IgG at 1/10000 dilution. Predicted band size: 39 kDa. Observed band size: 39 kDa.



Immunohistochemistry of paraffin-embedded human kidney tissue using PACO43491 at dilution of 1:100.



Immunohistochemistry of paraffin-embedded human skin tissue using PACO43491 at dilution of 1:100.