

SDC4 Antibody



PACO43477

Product Information

Size:

50ul

Reactivity:

Human

Source:

Rabbit

Isotype:

IgG

Applications:

ELISA, IHC

Recommended dilutions:

ELISA:1:2000-1:10000, IHC:1:20-1:200

Protein Background:

Cell surface proteoglycan that bears heparan sulfate.

Gene ID:

SDC4

Uniprot

P31431

Synonyms:

Syndecan-4 (SYND4) (Amphiglycan) (Ryudocan core protein), SDC4

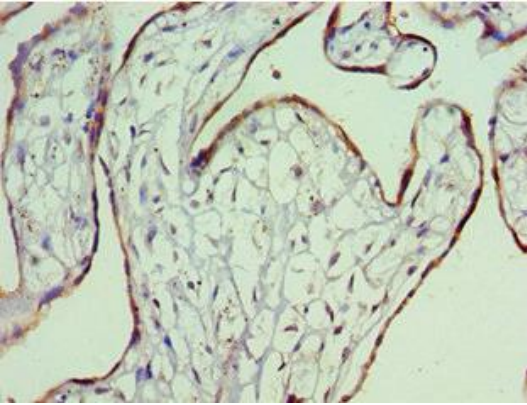
Immunogen:

Recombinant Human Syndecan-4 protein (19-145AA).

Storage:

PBS with 0.02% sodium azide, 50% glycerol, pH7.3.

Product Images



Immunohistochemistry of paraffin-embedded human placenta tissue using PACO43477 at dilution of 1:100.