

OTX2 Antibody



PACO43469

Product Information

Size:

50ul

Reactivity:

Human

Source:

Rabbit

Isotype:

IgG

Applications:

ELISA, IHC

Recommended dilutions:

ELISA:1:2000-1:10000, IHC:1:20-1:200

Protein Background:

Probably plays a role in the development of the brain and the sense organs. Can bind to the BCD target sequence (BTS): 5'-TCTAATCCC-3'.

Gene ID:

OTX2

Uniprot

P32243

Synonyms:

Homeobox protein OTX2 (Orthodenticle homolog 2), OTX2

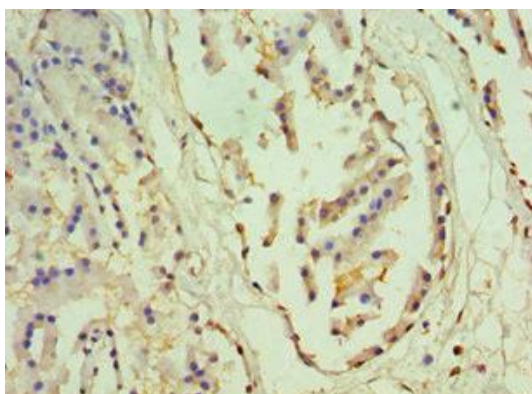
Immunogen:

Recombinant Human Homeobox protein OTX2 protein (140-280AA).

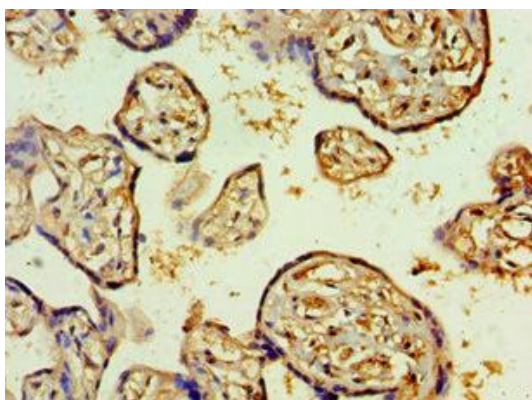
Storage:

PBS with 0.02% sodium azide, 50% glycerol, pH7.3.

Product Images



Immunohistochemistry of paraffin-embedded human prostate tissue using PACO43469 at dilution of 1:100.



Immunohistochemistry of paraffin-embedded human placenta tissue using PACO43469 at dilution of 1:100.