

KLRC1 Antibody



PACO43466

Product Information

Size:

50ul

Reactivity:

Human

Source:

Rabbit

Isotype:

IgG

Applications:

ELISA, IHC

Recommended dilutions:

ELISA:1:2000-1:10000, IHC:1:20-1:200

Protein Background:

Plays a role as a receptor for the recognition of MHC class I HLA-E molecules by NK cells and some cytotoxic T-cells.

Gene ID:

KLRC1

Uniprot

P26715

Synonyms:

NKG2-A/NKG2-B type II integral membrane protein (CD159 antigen-like family member A) (NK cell receptor A) (NKG2-A/B-activating NK receptor) (CD antigen CD159a), KLRC1, NKG2A

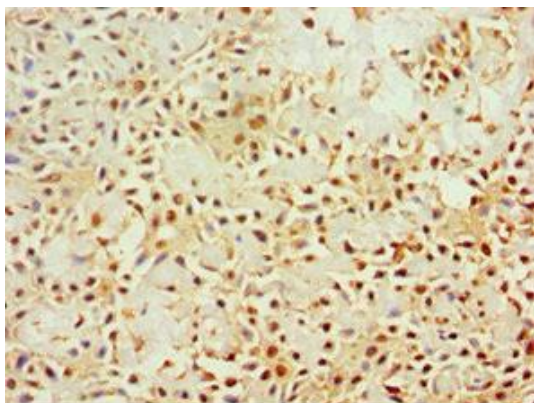
Immunogen:

Recombinant Human NKG2-A/NKG2-B type II integral membrane protein (114-233AA).

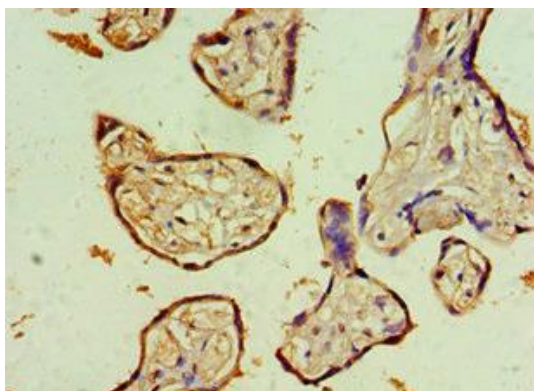
Storage:

PBS with 0.02% sodium azide, 50% glycerol, pH7.3.

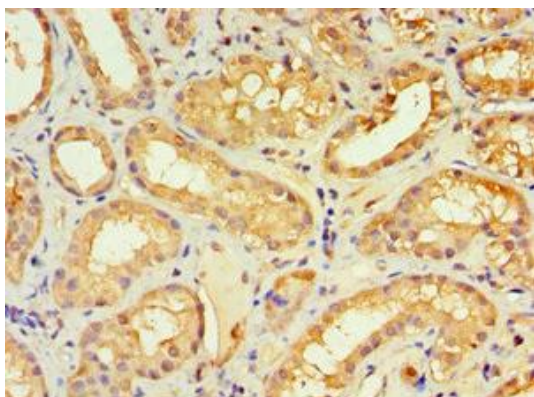
Product Images



Immunohistochemistry of paraffin-embedded human breast cancer using PACO43466 at dilution of 1:100.



Immunohistochemistry of paraffin-embedded human placenta tissue using PACO43466 at dilution of 1:100.



Immunohistochemistry of paraffin-embedded human kidney tissue using PACO43466 at dilution of 1:100.