

KIF6 Antibody



PACO43464

Product Information

Size:

50ul

Reactivity:

Human

Source:

Rabbit

Isotype:

IgG

Applications:

ELISA, IHC

Recommended dilutions:

ELISA:1:2000-1:10000, IHC:1:20-1:200

Protein Background:

Gene ID:

KIF6

Uniprot

Q6ZMV9

Synonyms:

Kinesin-like protein KIF6, KIF6, C6orf102

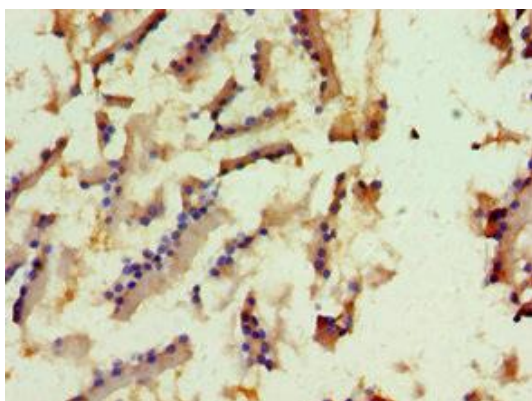
Immunogen:

Recombinant Human Kinesin-like protein KIF6 protein (565-814AA).

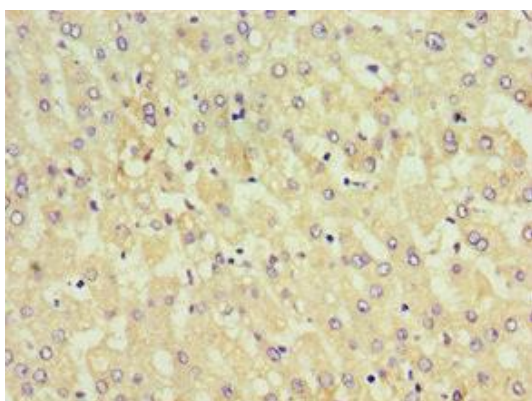
Storage:

PBS with 0.02% sodium azide, 50% glycerol, pH7.3.

Product Images



Immunohistochemistry of paraffin-embedded human prostate tissue using PACO43464 at dilution of 1:100.



Immunohistochemistry of paraffin-embedded human liver tissue using PACO43464 at dilution of 1:100.