

PACO43413

---

## Product Information

**Size:**

50ul

**Reactivity:**

Human

**Source:**

Rabbit

**Isotype:**

IgG

**Applications:**

ELISA, IHC

**Recommended dilutions:**

ELISA:1:2000-1:10000, IHC:1:20-1:200

**Protein Background:**

Can interact with DNA and histones and may scavenge nuclear material released from damaged circulating cells. May also function as a calcium-dependent lectin.

**Gene ID:**

APCS

**Uniprot**

P02743

**Synonyms:**

Serum amyloid P-component (SAP) (9.5S alpha-1-glycoprotein) [Cleaved into: Serum amyloid P-component(1-203)], APCS, PTX2

**Immunogen:**

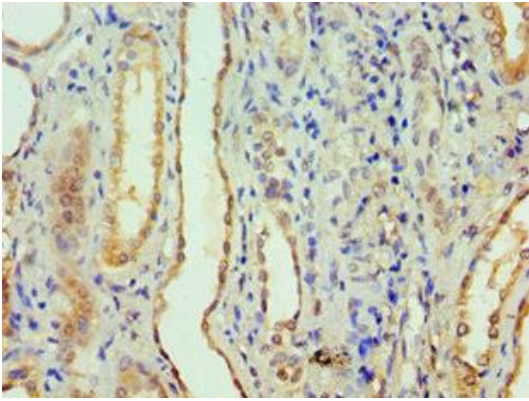
Recombinant Human Serum amyloid P-component protein (1-223AA).

**Storage:**

PBS with 0.02% sodium azide, 50% glycerol, pH7.3.

## Product Images

---



Immunohistochemistry of paraffin-embedded human kidney tissue using PACO43413 at dilution of 1:100.