

ALPP Antibody



PACO43405

Product Information

Size:

50ul

Reactivity:

Human

Source:

Rabbit

Isotype:

IgG

Applications:

ELISA, WB, IHC, IP

Recommended dilutions:

ELISA:1:2000-1:10000, WB:1:500-1:2000,
IHC:1:20-1:200, IP:1:200-1:2000

Protein Background:

Gene ID:

ALPP

Uniprot

P05187

Synonyms:

Alkaline phosphatase, placental type (EC 3.1.3.1) (Alkaline phosphatase Regan isozyme) (Placental alkaline phosphatase 1) (PLAP-1), ALPP, PLAP

Immunogen:

Recombinant Human Alkaline phosphatase, placental type protein (260-520AA).

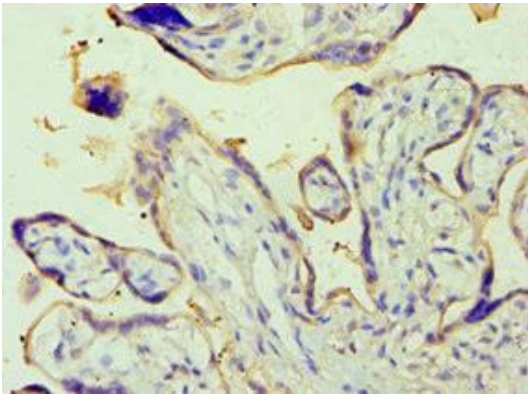
Storage:

PBS with 0.02% sodium azide, 50% glycerol, pH7.3.

Product Images



Western blot. All lanes: Alkaline phosphatase, placental type antibody at 6 μ g/ml. Lane 1: A549 whole cell lysate. Lane 2: Hela whole cell lysate. Secondary. Goat polyclonal to rabbit IgG at 1/10000 dilution. Predicted band size: 58 kDa. Observed band size: 58 kDa.



Immunohistochemistry of paraffin-embedded human placenta tissue using PACO43405 at dilution of 1:100.