

# STK3 Antibody



PACO43389

---

## Product Information

**Size:**

50ul

**Reactivity:**

Human, Mouse

**Source:**

Rabbit

**Isotype:**

IgG

**Applications:**

ELISA, WB, IHC, IF

**Recommended dilutions:**

ELISA:1:2000-1:10000, WB:1:500-1:5000,  
IHC:1:20-1:200, IF:1:50-1:200

**Protein Background:****Gene ID:**

STK3

**Uniprot**

Q13188

**Synonyms:**

Serine/threonine-protein kinase 3 (EC 2.7.11.1) (Mammalian STE20-like protein kinase 2) (MST-2) (STE20-like kinase MST2) (Serine/threonine-protein kinase Krs-1) [Cleaved into: Serine/threonine-protein kinase 3 36kDa subunit (MST2/N); Serine/threonine-protein kinase 3 20kDa subunit (MST2/C)], STK3, KRS1 MST2

**Immunogen:**

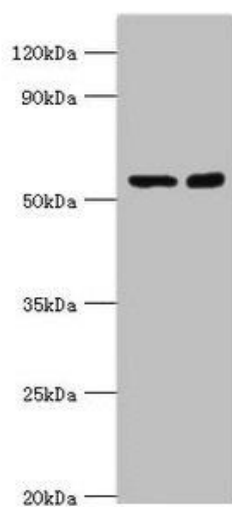
Recombinant Human Serine/threonine-protein kinase 3 protein (323-450AA).

**Storage:**

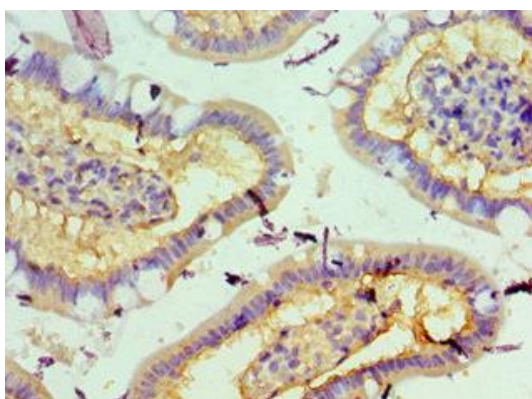
PBS with 0.02% sodium azide, 50% glycerol, pH7.3.

## Product Images

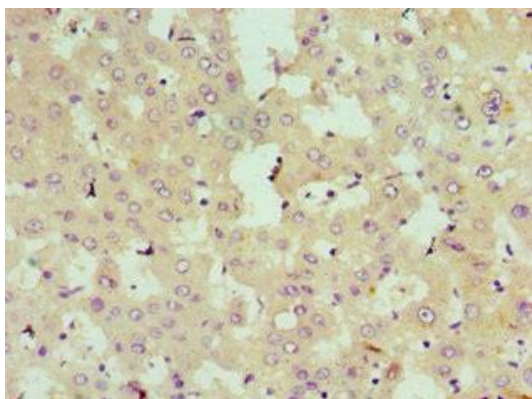
---



Western blot. All lanes: STK3 antibody at 8 $\mu$ g/ml. Lane 1: Hela whole cell lysate. Lane 2: NIH/3T3 whole cell lysate. Secondary. Goat polyclonal to rabbit IgG at 1/10000 dilution. Predicted band size: 57, 60 kDa. Observed band size: 57 kDa.



Immunohistochemistry of paraffin-embedded human small intestine tissue using PACO43389 at dilution of 1:100.



Immunohistochemistry of paraffin-embedded human liver tissue using PACO43389 at dilution of 1:100.