

PACO43311

Product Information

Size:

50ul

Reactivity:

Human, Rat

Source:

Rabbit

Isotype:

IgG

Applications:

ELISA, WB, IHC

Recommended dilutions:

ELISA:1:2000-1:10000, WB:1:200-1:1000,
IHC:1:20-1:200

Protein Background:

Closely involved in osteoclastic bone resorption and may participate partially in the disorder of bone remodeling. Displays potent endoprotease activity against fibrinogen at acid, pH. May play an important role in extracellular matrix degradation.

Gene ID:

CTSK

Uniprot

P43235

Synonyms:

Cathepsin K (EC 3.4.22.38) (Cathepsin O) (Cathepsin O2) (Cathepsin X), CTSK, CTSO
CTSO2

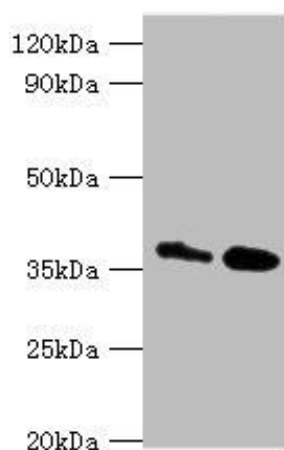
Immunogen:

Recombinant Human Cathepsin K protein (115-329AA).

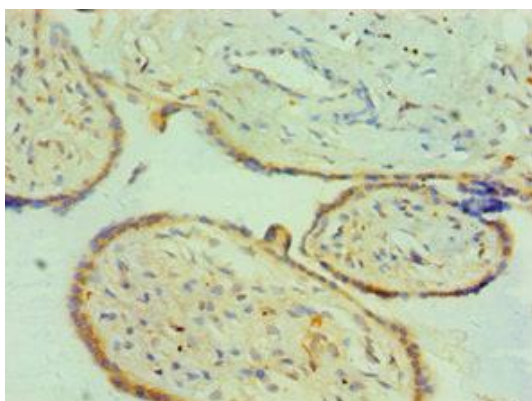
Storage:

PBS with 0.02% sodium azide, 50% glycerol, pH7.3.

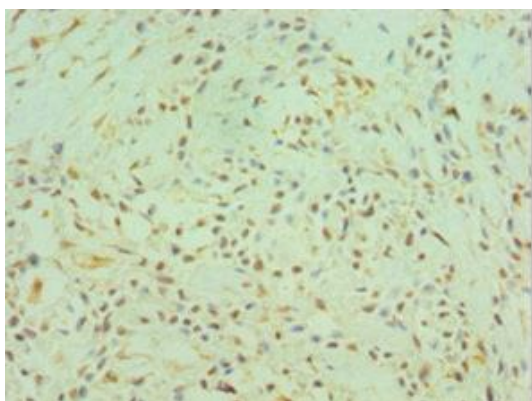
Product Images



Western blot. All lanes: CTSK antibody at 8 μ g/ml. Lane 1: MCF-7 whole cell lysate. Lane 2: Rat brain tissue. Secondary: Goat polyclonal to rabbit IgG at 1/10000 dilution. Predicted band size: 37 kDa. Observed band size: 37 kDa.



Immunohistochemistry of paraffin-embedded human placenta tissue using PACO43311 at dilution of 1:100.



Immunohistochemistry of paraffin-embedded human breast cancer using PACO43311 at dilution of 1:100.