

PACO43304

Product Information

Size:

50ul

Reactivity:

Human

Source:

Rabbit

Isotype:

IgG

Applications:

ELISA, IHC

Recommended dilutions:

ELISA:1:2000-1:10000, IHC:1:20-1:200

Protein Background:

TK1(Thymidine kinase, cytosolic) belongs to the thymidine kinase family and is a regulatory enzyme that can interchange between its dimeric and tetrameric forms, which have low and high catalytic efficiencies, respectively. TK1 is involved in DNA synthesis and an important proliferation marker.

Gene ID:

TK1

Uniprot

P04183

Synonyms:

Thymidine kinase, cytosolic (EC 2.7.1.21), TK1

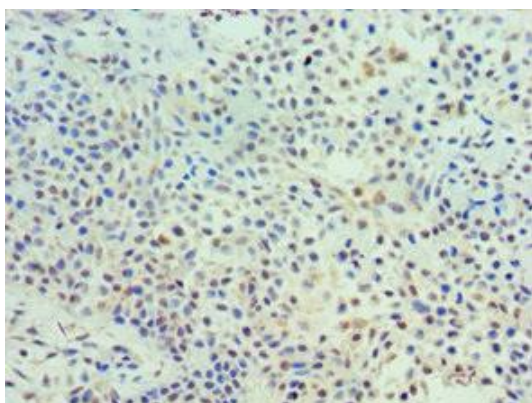
Immunogen:

Recombinant Human Thymidine kinase, cytosolic protein (1-234AA).

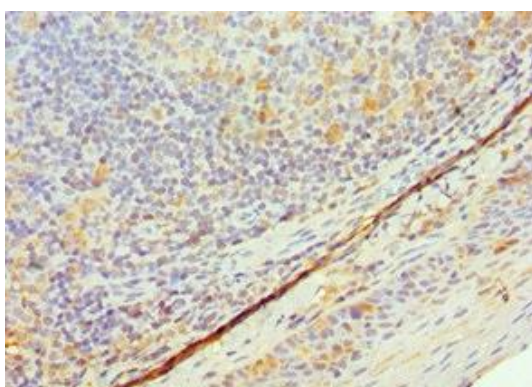
Storage:

PBS with 0.02% sodium azide, 50% glycerol, pH7.3.

Product Images



Immunohistochemistry of paraffin-embedded human breast cancer using PACO43304 at dilution of 1:100.



Immunohistochemistry of paraffin-embedded human tonsil tissue using PACO43304 at dilution of 1:100.